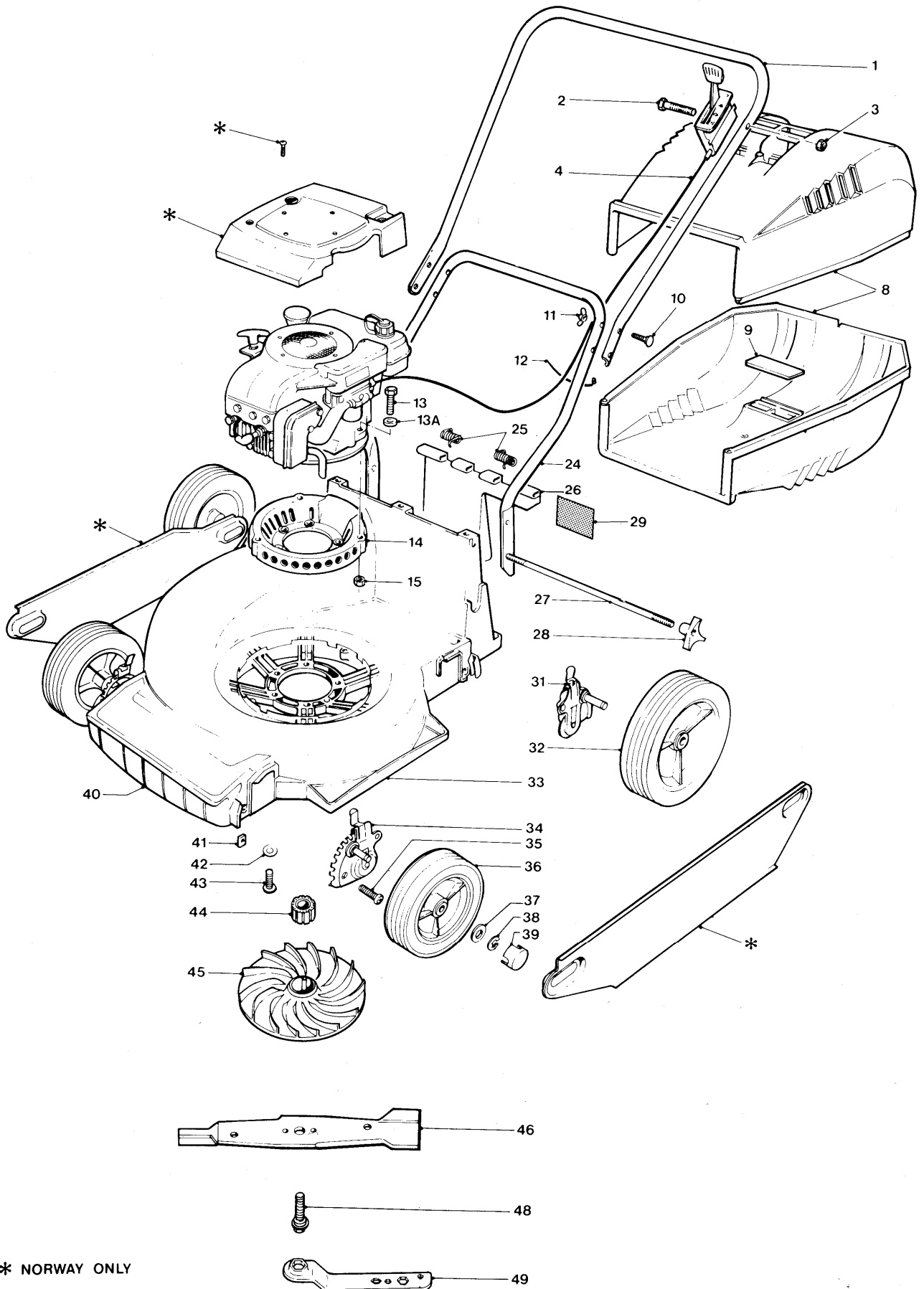




RL 40 9644101
9644102



* NORWAY ONLY


RL 40 9644101
9644101

KEY No.	PART No.	DESCRIPTION	QUANTITY	COMMENTS/ APPLICATION
1	5106170-00/3	HANDLE UPPER	1	NLA USE 5126711-00/0
2	5140045-06/2	SCREW 1/4" UNC X 38MM LG HEX	1	
3	5140164-00/4	NUT LOCKING	1	
4	5136653-00/2	THROTTLE CONTROL COMPLETE	1	
8	5106139-00/8	GRASS BOX (HALF)	2	ALT USE 5106139-03/2
9	5147855-00/0	BLANKING PLATE	2	
10	5146685-01/0	BOLT HANDLE 1/4UNC X 35LG	4	
11	5146684-00/5	WING NUT	4	
12	5147150-00/6	TIE WRAP	1	
13	5140045-04/7	SCREW 5/16" UNC X 38MM LG	3	
13A	5140281-04/8	WASHER	3	
14	5116675-00/9	ADAPTOR PLATE	1	
15	5140837-00/5	NUT NYLOC 5/16UNC.	3	
24	5106127-00/3	HANDLE LOWER	1	NLA USE 5126702-00/9
25	5136711-00/8	SPRING SAFETY FLAP	2	
26	5116677-00/5	FLAP	1	
27	5136623-00/5	TIE BAR	1	
28	5140690-00/8	KNOB WING	2	
29	5146485-00/7	LABEL WARNING	1	GB.
	5146534-00/2	LABEL WARNING	1	I.
	5147859-00/2	LABEL WARNING	1	E.
	5146487-00/3	LABEL WARNING	1	A.B.F.D.NL.CH.
	5146488-00/1	LABEL WARNING	1	F.B.NL.CH.D.A.N.
31	5116676-02/3	ADJ N/S REAR & O/S FRONT	2	
32	5147828-00/7	WHEEL 7"	2	
33	5106140-00/6	CHASSIS	1	
34	5116676-01/5	ADJ N/S FRONT & O/S REAR	2	
35	5141585-00/9	SCREW 1/4"-20UNC X 19MM LG	4	
36	5147829-00/5	WHEEL 6"	2	
37	5140281-01/4	WASHER	8	
38	5141755-00/8	RING RETAINER	4	
39	5147830-00/3	HUB CAP	4	
40	5116694-00/0	LABEL FLYMO	1	
40B	5116671-00/8	COVER FRONT	1	
41	5147777-00/6	NUT	4	
42	5146309-00/9	WASHER	6	
43	5141585-01/7	SCREW 1/4"-20UNC X 25MM LG	6	
44	5126222-01/6	INSERT	1	
45	5116663-00/5	FAN	1	
46	5116692-00/4	BLADE 40CM	1	
48	5146677-06/6	BOLT BLADE 37MM LONG	1	
49	5130109-00/1	SPANNER	1	

PRODUCT VARIANT

 9644101-01 GB.
 9644101-11 I.

 9644101-16 OSS.
 9644101-22 CH.

9644102-08 NL.B.F.

9644102-09 D.

Where no application details are shown the part applies to all countries.