

DATE 29/08/89
PROGRAM PM14

FLYMO LTD - PARTS MANUAL - MODELS REPORT

PAGE 1
PRTM 14

KEY	PART NUMBER	DESCRIPTION	QTY	PRICE	COMMENTS
01	5195097-00/0	BOLT 5/16 X 3/4	4	.25	
02	5195079-00/8	WASHER 5/16" I.D	4	.06	
03	5195041-00/8	BELT GUARD R/H	1	4.05	
04	5195039-00/2	BRACKET	1	16.20	USE 5195113-00 & 5195114-00
04A	5195113-00/5	BRACKET	1	16.20	
05	5110334-03/3	HOOD 75CM	1	.00	USE 5110334-01/7
06	5120338-00/8	BLADE 38CM	2	7.02	
07	5146677-04/1	BOLT BLADE 75MM LONG	2	1.64	
08	5195040-00/0	BEARING HOUSING ASSY	1	51.90	
09	5195079-00/8	WASHER 5/16" I.D	4	.06	
10	5195088-00/9	NUT NYLOC 5/16	4	.10	
11	5195079-00/8	WASHER 5/16" I.D	8	.06	
12	5195088-00/9	NUT NYLOC 5/16	8	.10	
13	5117253-00/4	LABEL FLYMO	1	5.80	
14	5116508-00/2	INSERT IMPELLER	1	6.60	
15	5140001-00/8	BLADE SPACER	3	.93	
16	5195075-00/6	R CLIP	2	.15	
17	5195061-00/6	CLEVIS PIN	2	1.40	
18	5195097-00/0	BOLT 5/16 X 3/4	8	.25	
19	5195044-00/2	PULLEY CUTTER UNIT	2	27.20	
20	5195087-00/1	NUT NYLOC 1/4	16	.10	
21	5195080-00/6	WASHER 1/4" I.D	16	.06	
22	5195092-00/1	SCREW 1/4 X 3/4	16	.40	
23	5141318-00/5	BEARING	4	12.09	
24	5195067-00/3	CIRCLIP	4	.10	
25	5100023-02/6	COWL	1	69.76	
26	5116968-00/8	IMPELLER	1	16.50	ANTI CLOGGING
27	5195106-00/9	BOLT M6	2	.10	
28	5195069-00/9	WASHER DOMED	2	.15	
29	5195043-00/4	BELT CUTTER	1	42.80	
30	5195042-00/6	BELT GUARD L/H	1	4.05	
31	5195085-00/5	GRUBSCREW 5/16 X 5/8W	2	.25	
32	5195074-00/9	KEY WOODRUFF	4	.35	
33	5195046-00/7	SHAFT CUTTER UNIT	2	19.30	
34	5137747-00/1	LABEL (FINGER WARNING)	2	1.05	
35	5120350-00/3	ENGINE BRACKET	2	15.02	
36	5195097-00/0	BOLT 5/16 X 3/4	2	.25	
37	5195079-00/8	WASHER 5/16" I.D	2	.06	
38	5137783-00/6	LABEL GCL75	1	1.80	
39	5195110-00/1	BOLT 3/8UNF X 2 3/4	1	.55	
40	5195078-00/0	WASHER 3/8" I.D	4	.06	
41	5195050-00/9	FRAME TOWING HITCH	1	17.40	
42	5195089-00/7	NUT NYLOC 3/8	2	.20	
43	5195104-00/4	BOLT 3/8 X 3	1	.55	
44	5195049-00/1	BRACKET HITCH	1	18.00	
45	5195047-00/5	SEAT SULKY	1	48.50	
46	5195088-00/9	NUT NYLOC 5/16	4	.10	
47	5195079-00/8	WASHER 5/16" I.D	8	.06	
48	5195048-00/3	FRAME SULKY SEAT	1	22.00	
49	5195051-00/7	FRAME AXLE	1	15.80	
50	5195097-00/0	BOLT 5/16 X 3/4	4	.25	
51	5195081-00/4	WASHER 3/4" I.D	4	.35	
52	5195078-00/0	WASHER 3/8" I.D	4	.06	
53	5195084-00/8	WASHER STARLOCK	4	.06	
54	5195103-00/6	BOLT 3/8 X 3/4	4	.30	
55	5195008-00/5	TYPE 12 X 550-4	2	22.40	

KEY	PART NUMBER	DESCRIPTION	QTY	PRICE	COMMENTS
56	5195008-00/7	HUB WHEEL	2	17.90	
57	5195076-00/4	SPLIT PIN 1/8	2	.10	
58	5195070-00/7	BUSH WHEEL	2	1.80	
59	5195010-00/3	TUBE TYRE	2	7.60	
60	5195013-00/7	LEVER BAIL	1	6.20	
61	5195086-00/3	NUT NYLOCK 2BA	4	.15	
62	5195082-00/2	WASHER 2BA	6	.06	
63	5195036-00/8	THROTTLE CONTROL	1	10.50	
64	5195091-00/3	SCREW 2BA X 1.5"	3	.20	
65	5195037-00/6	CABLE CLUTCH	1	14.00	
66	5195015-00/2	KNOB LEVER	3	2.40	
67	5195014-00/5	LEVER DRIVE CUTTER	1	33.60	
68	5195077-00/2	SPLIT PIN 1/8	1	.10	
69	5195078-00/0	WASHER 3/8" I.D	1	.06	
70	5195101-00/0	BOLT 5/16 X 2	1	.20	
71	5195079-00/8	WASHER 5/16" I.D	6	.06	
72	5195054-00/1	PIVOT DECK	1	.80	
73	5195100-00/2	BOLT 5/16 X 1.75"	2	.40	
74	5195088-00/9	NUT NYLOC 5/16	4	.10	
75	5195016-00/0	ROD CUTTER DRIVE	1	7.00	
76	5195085-00/5	GRUBSCREW 5/16 X 5/8W	1	.25	
77	5195055-00/8	BOSS SPRING	1	2.20	
78	5195063-00/2	SPRING	1	1.80	
79	5195052-00/5	TRUNION	1	2.05	
80	5195089-00/7	NUT NYLOC 3/8	1	.20	
81	5195078-00/0	WASHER 3/8" I.D	1	.06	
82	5195025-00/1	SHIELD EXHAUST	1	4.35	
83	5195097-00/0	BOLT 5/16 X 3/4	4	.25	
84	5195079-00/8	WASHER 5/16" I.D	12	.06	
85	5195099-00/6	BOLT 5/16 X 1.5"	4	.30	
86	5195006-00/1	CHASSIS GCL75	1	60.40	
87	5195102-00/8	BOLT 5/16 X 2.5	1	.45	
88	5195056-00/6	CHASSIS COUPLING	1	24.00	USE 5195114-00 & 5195113-00
88A	5195114-00/3	CHASSIS COUPLING	1	24.00	
89	5195026-00/9	BRACKET PIVOT	1	5.50	
90	5195079-00/8	WASHER 5/16" I.D	3	.06	
91	5195088-00/9	NUT NYLOC 5/16	12	.10	
92	5195064-00/0	SPRING	1	1.25	
93	5195027-00/7	BRACKET CLUTCH CABLE	1	3.75	
94	5195080-00/6	WASHER 1/4" I.D	1	.06	
95	5195028-00/5	BELT GUIDE	1	5.60	
96	5195088-00/9	NUT NYLOC 5/16	4	.10	
97	5195079-00/8	WASHER 5/16" I.D	4	.06	
98	5195065-00/7	SPRING	1	1.05	
99	5195057-00/4	JOCKEY SPACER	1	1.00	
100	5195071-00/5	BUSH	1	.80	
101	5195102-00/8	BOLT 5/16 X 2.5	1	.45	
102	5195079-00/8	WASHER 5/16" I.D	2	.06	
103	5195033-00/5	GUIDE BRACKET	1	1.05	
104	5195087-00/1	NUT NYLOC 1/4	1	.10	
105	5195112-00/7	BUSH	1	.45	
106	5195044-00/2	PULLEY CUTTER UNIT	1	27.20	
107	5195031-00/9	PULLEY CLUTCH	1	6.50	
108	5195069-00/9	WASHER DOMED	1	.15	
109	5195030-00/1	ARM CLUTCH PULLEY	1	3.20	
110	5195105-00/1	BOLT 7/16 X 2.5	1	.80	

KEY	PART	NUMBER	DESCRIPTION	QTY	PRICE	COMMENTS
111		5195088-00/9	NUT NYLOC 5/16	1	.10	
112		5195029-00/3	BELT DRIVE	1	17.90	
113		5195073-00/1	KEY ENGINE	1	.65	
114		5195034-00/3	PULLEY ENGINE	1	21.20	
115		5195074-00/9	KEY WOODRUFF	1	.35	
116		5195068-00/1	CIRCLIP	1	.30	
117		5195035-00/0	PULLEY TRANSAXLE	1	9.40	
118		5195065-00/7	SPRING	1	1.05	
119		5195085-00/5	GRUBSCREW 5/16 X 5/8W	1	.25	
120		5195087-00/1	NUT NYLOC 1/4	1	.10	
121		5195080-00/6	WASHER 1/4" I.D	1	.06	
122		5195058-00/2	BRAKE ARM SPACER	1	.40	
123		5195093-00/9	BOLT 1/4 X 3/4	1	.15	
124		5195083-00/0	WASHER 5/16" STARLOCK	1	.06	
125		5195107-00/7	BOLT M8	1	.10	
126		5147609-00/1	KEY T/AXLE INPUT SHAFT	1	.27	
127		5195011-00/1	HANDLE LOWER	1	17.80	
128		5195109-00/3	SPEED CLIP	4	.15	
129		5195092-00/1	SCREW 1/4 X 3/4	2	.40	
130		5195080-00/6	WASHER 1/4" I.D	4	.06	
131		5195023-00/6	BRACKET GEAR LEVER	1	2.20	
132		5195066-00/5	SPRING	1	.80	
133		5195024-00/4	BEARING SUPPORT	1	12.00	
134		5195098-00/8	BOLT 5/16 X 1	2	.25	
135		5195060-00/8	SPACER	1	.35	
136		5195093-00/9	BOLT 1/4 X 3/4	1	.15	
137		5195080-00/6	WASHER 1/4" I.D	1	.06	
138		5195053-00/3	GEAR LINK PLATE	1	5.40	
139		5195077-00/2	SPLIT PIN 1/8	1	.10	
140		5126953-00/8	LABEL STARTING	1	2.45	
141		5195012-00/9	HANDLE UPPER	1	49.40	
142		5195087-00/1	NUT NYLOC 1/4	2	.10	
143		5195017-00/8	LEVER GEAR	1	10.40	
144		5195108-00/5	SCREW 3/16 S.T.	4	.06	
145		5195090-00/5	SCREW 2BA X 1/2	1	.10	
146		5195088-00/9	NUT NYLOC 5/16	2	.10	
147		5195097-00/0	BOLT 5/16 X 3/4	2	.25	
148		5195007-00/9	CHASSIS COVER	1	6.80	
149		5146485-00/7	LABEL WARNING	1	2.45	GB.
150		5195079-00/8	WASHER 5/16" I.D	2	.06	
151		5195101-00/0	BOLT 5/16 X 2	2	.20	
152		5195021-00/0	FOOTREST	2	3.60	
153		5195022-00/8	RUBBER FOOTREST	2	5.10	
154		5195094-00/7	BOLT 1/4 X 1"	1	.15	
155		5195080-00/6	WASHER 1/4" I.D	1	.06	
156		5195087-00/1	NUT NYLOC 1/4	1	.10	
157		5195038-00/4	ROD	1	3.20	
158		5195018-00/6	GEAR TUBE SELECTOR	1	4.20	
159		5195078-00/0	WASHER 3/8" I.D	1	.06	
160		5195079-00/8	WASHER 5/16" I.D	1	.06	
161		5195096-00/2	BOLT 5/16 X 1/2	1	.20	
162		5195019-00/4	LEVER PARKING BRAKE	1	8.45	
163		5195099-00/6	BOLT 5/16 X 1.5"	1	.30	
164		5195059-00/0	BRAKE PIVOT	1	1.60	
165		5195009-00/5	TYRE 13 X 550-6	2	22.60	
166		5195062-00/4	WHEEL HUB	2	17.90	

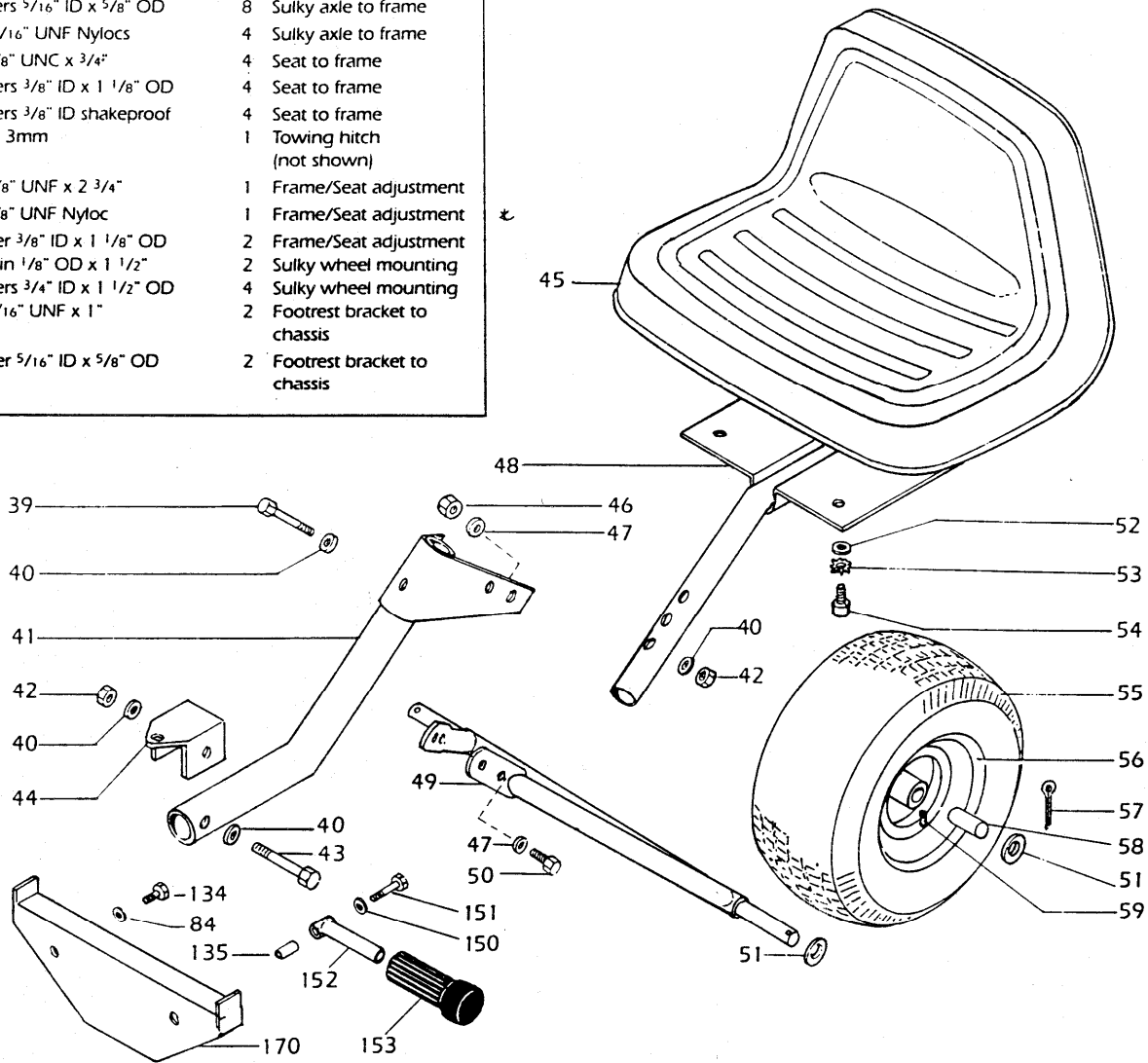
DATE 29/08/89
PROGRAM PM14

FLYMO LTD - PARTS MANUAL - MODELS REPORT

PAGE 4
PRTM 14

KEY	PART	NUMBER	DESCRIPTION	QTY	PRICE	COMMENTS
167		5195095-00/4	BOLT 1/4 X 1.75"	2	.30	
168		5195010-00/3	TUBE TYRE	2	7.60	
169		5195087-00/1	NUT NYLOC 1/4	2	.10	
170		5195020-00/2	FOOTREST SUPPORT	1	17.85	
171		5195111-00/9	PLASTIC CAP	2	.25	
172		5195071-00/5	BUSH	1	.80	
173		5130109-00/1	SPANNER	1	1.49	

- | | |
|-----------------------------|-------------------------------|
| Bolts 5/16" UNF x 3/4" | 4 Sulky axle to frame |
| Washers 5/16" ID x 5/8" OD | 8 Sulky axle to frame |
| Nuts 5/16" UNF Nylocs | 4 Sulky axle to frame |
| Bolt 3/8" UNC x 3/4" | 4 Seat to frame |
| Washers 3/8" ID x 1 1/8" OD | 4 Seat to frame |
| Washers 3/8" ID shakeproof | 4 Seat to frame |
| R clip 3mm | 1 Towing hitch (not shown) |
| Bolt 3/8" UNF x 2 3/4" | 1 Frame/Seat adjustment |
| Nut 3/8" UNF Nyloc | 1 Frame/Seat adjustment |
| Washer 3/8" ID x 1 1/8" OD | 2 Frame/Seat adjustment |
| Split pin 1/8" OD x 1 1/2" | 2 Sulky wheel mounting |
| Washers 3/4" ID x 1 1/2" OD | 4 Sulky wheel mounting |
| Bolt 5/16" UNF x 1" | 2 Footrest bracket to chassis |
| Washer 5/16" ID x 5/8" OD | 2 Footrest bracket to chassis |



KEY No.	PART No	DESCRIPTION	QUANTITY	COMMENTS APPLICATION
39	5195110-00/1	BOLT 3/8 UNF x 2 3/4	1	
40	5195078-00/0	WASHER 3/8" I.D.	4	
41	5195050-00/9	FRAME TOWING HITCH	1	
42	5195089-00/7	NUT NYLOC 3/8	2	
43	5195104-00/4	BOLT 3/8 x 3	1	
44	5195049-00/1	BRACKET HITCH	1	
45	5195047-00/5	SEAT SULKY	1	
46	5195088-00/9	NUT NYLOC 5/16	4	
47	5195079-00/8	WASHER 5/16" I.D.	8	
48	5195048-00/3	FRAME SULKY SEAT	1	
49	5195051-00/7	FRAME AXLE	1	
50	5195097-00/0	BOLT 5/16 x 3/4	4	
51	5195081-00/4	WASHER 3/4" I.D.	4	
52	5195078-00/0	WASHER 3/8" I.D.	4	
53	5195084-00/8	WASHER STARLOCK	4	

KEY No.	PART No	DESCRIPTION	QUANTITY	COMMENTS APPLICATION
54	5195103-00/6	BOLT 3/8 x 3/4	4	
55	5195009-00/5	TYRE 13 x 550-6	2	
56	5195008-00/7	HUB WHEEL	2	
57	5195076-00/4	SPLIT PIN 1/8	2	
58	5195070-00/7	BUSH WHEEL	2	
59	5195010-00/3	TUBE TYRE	2	
84	5195079-00/8	WASHER	2	
134	5195098-00/8	BOLT	2	
135	5195060-00/8	SPACER	2	
150	5195079-00/8	WASHER	2	
151	5195101-00/0	BOLT	2	
152	5195021-00/0	FOOT REST	2	
153	5195022-00/8	RUBBER FOOTREST	2	
170	5195020-00/2	SUPPORT FOOTREST	2	