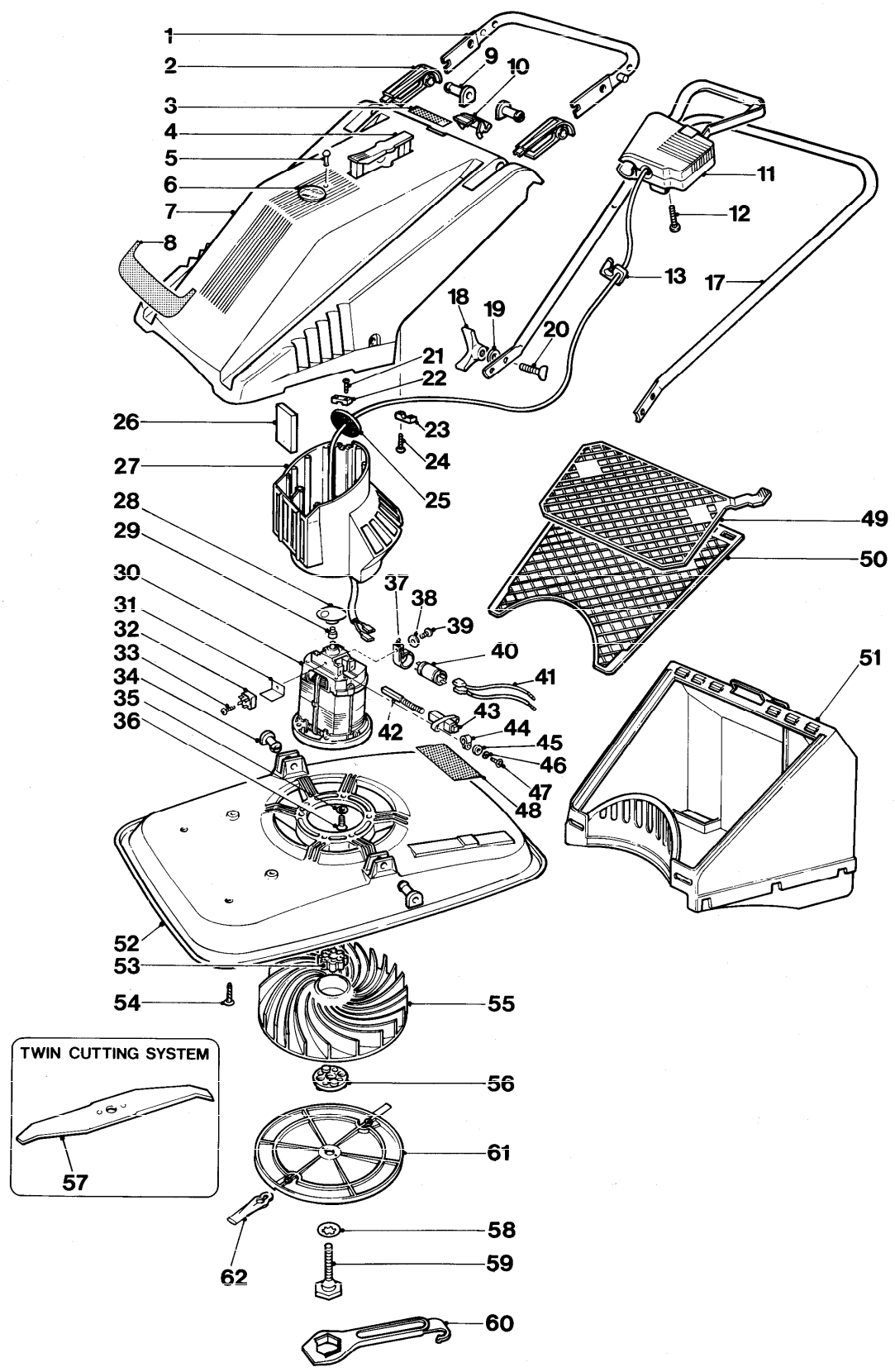




SPRINTMASTER XE38-6 9633841 9633842





SPRINTMASTER XE38-6 9633841 9633842

KEY No.	PART No	DESCRIPTION	QUANTITY	COMMENTS APPLICATION	KEY No.	PART No	DESCRIPTION	QUANTITY	COMMENTS APPLICATION
1	5116952-00/2	HANDLE LOWER	1		36	5141585-01/7	SCREW 1/4 x 25MM LG	6	
2	5116627-01/8	HANDLE RETAINER	2		37	323410-00/1	CLIP	1	
3	5148281-01/6	LABEL XE 38 TWIN	1	GB.EI	38	322827-00/7	WASHER SPRING (PLATED)	1	
	5147988-01/7	LABEL XE 38	1		39	341624-01/3	SCREW M4x8	1	
4	5126550-01/0	HANDLE CARRYING	1		40	323183-00/4	SUPPRESSOR	1	
5	5148052-00/3	RIVET	1		41	322839-01/0	LEAD	2	
6	5140288-00/1	LENS	1		42	322824-00/4	CARBON BRUSH COMPLETE	2	
	5137465-00/0	LABEL AUTO STOP	1		43	322819-00/4	BRUSH HOUSING	2	
7	5106121-09/7	COWLING ASSY C/W LENS	1		44	291890-00/2	CABLE CLAMP	1	
8	5136725-00/8	LABEL FLYMO	1		45	29100-00/5	WASHER	4	
9	5137456-01/7	RETAINING PIN	2		46	322827-00/7	WASHER SPRING (PLATED)	4	
10	5126373-01/7	CATCH	1		47	321689-00/2	SCREW M4 x 16	4	
11	5126891-05/9	SWITCHBOX UNIVERSAL	1	GB.EI.	48	5146467-00/5	LABEL WARNING ELECTRIC	2	GB. E.I.
	5126901-03/1	SWITCHBOX (EUROPE)	1	B.F.NL.N.DK.I.		5136708-01/2	LABEL WARNING ELECTRIC	2	F.B.NL.CH.
	5126901-08/0	SWITCHBOX (EUROPE)	1	D.		5136712-01/4	LABEL WARNING ELECTRIC	2	I.DK.N.
	5126902-04/7	SWITCHBOX (EUROPE)	1	S.		5136507-00/0	LABEL WARNING ELECTRIC	2	D.
12	5146672-00/0	SCREW GKN POLYMATE	2			5148371-00/7	LABEL WARNING ELECTRIC	2	S.
13	5140863-01/9	CABLE CLIP LARGE	1		49	5116905-00/0	SCREEN VARIABLE	1	
14	5126240-00/0	RUNNER CABLE	1	D.	50	5116624-00/7	SCREEN	1	
15	5147793-00/3	CORD GUIDE CLIPS	2	D.	51	5148148-01/7	GRASSBOX ASSY C/W SCREEN	1	
17	5126816-04/9	HANDLE/LABEL ASSY	1	GB.EI.	52	5106205-12/2	HOOD 38CM	1	
	5126700-00/3	HANDLE UPPER PLASTIC COATED	1		53	5126133-00/7	INSERT IMPELLER	1	
	5126701-01/9	HANDLE/CORD GUIDE ASSY	1	D	54	5146045-02/5	SCREW	4	
18	5140690-00/8	KNOB WING WHITE	2		55	5116197-04/6	IMPELLER PEGGED	1	
19	5140266-00/7	WASHER	2		56	5136668-01/8	BLADE SPACER PEGGED	4	
20	5140607-00/2	BOLT HANDLE 1/4 x 45LG	2		57	5126136-05/9	BLADE 38CM	1	
21	5147025-00/0	SCREW M3.5	2		58	5148259-00/4	WASHER ANTI FRICTION PTFE	1	
22	5140705-00/4	CABLE CLAMP	1		59	5137608-00/5	BLADE BOLT C/W PTFE WASHER	1	
23	5136692-00/0	CABLE CLAMP	1		60	5126682-00/3	SPANNER/SCRAPER ABS	1	
24	5146824-00/7	SCREW	2	ALT USE 5147665-00/4	61	5126735-00/9	DISC ASSY 38CM	1	GB. EI.
25	5147135-00/7	SEALING WASHER	1		62	5148257-02/4	CUTTER PLASTIC LONG LIFE	2	GB. EI.
26	5146628-00/2	FILTER	2						
27	5106122-00/4	FILTER SUPPORT	1						
28	5146469-01/9	WARNING DISC ASSY ORANGE	1						
	5126284-03/2	BRAKE 220/240V	1	USE 5126284-83/4					
29	5147752-00/9	ADAPTOR	1						
	5147114-00/2	SCREW TAPTITE	4	D.S.					
30	5148040-00/8	MOTOR 240 VOLT	1	GB.					
	5148040-01/6	MOTOR 220 VOLT	1						
	5126583-00/3	MOTOR 220V C/W ADAPTOR	1	D.S.					
31	322812-02/5	INSULATOR	1						
32	322814-00/5	RECTIFIER	1						
33	2902868-00/5	SCREW	1						
34	5137456-01/7	RETAINING PIN	2						
35	5146309-00/9	WASHER	6						

WHERE NO APPLICATION DETAILS ARE SHOWN, PART APPLIES TO ALL COUNTRIES

PRODUCT VARIANT

9633841-25	GB	9633842-72	A.F.B.NL	9633842-78	D
9633842-18	EI	9633842-74	N.DK.I.	9633842-79	S