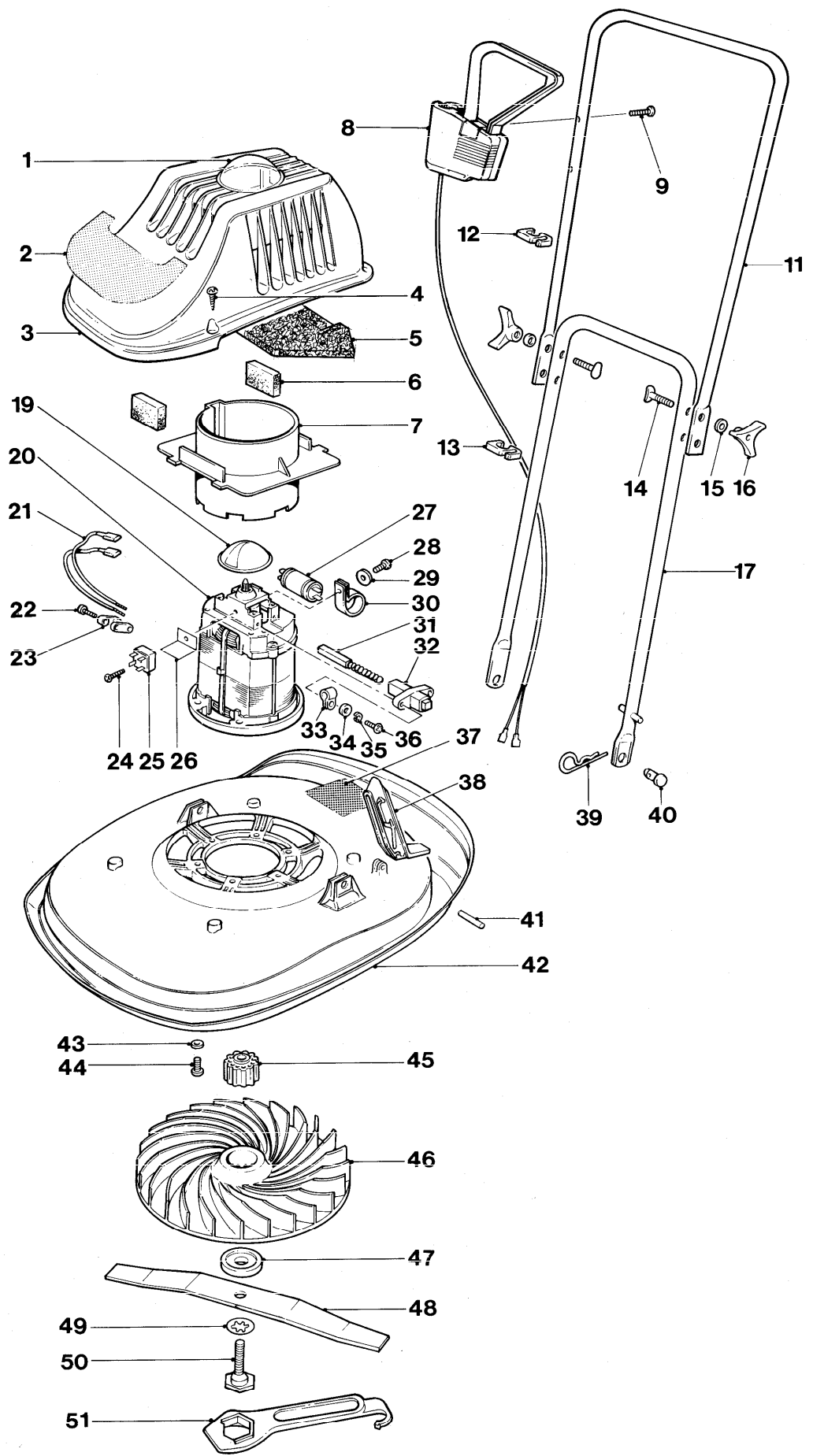




E47-4 9634701  
9634702




**E47-4 9634701**  
**9634702**

KEY No.	PART No	DESCRIPTION	QUANTITY	COMMENTS APPLICATION	KEY No.	PART No	DESCRIPTION	QUANTITY	COMMENTS APPLICATION
1	5126120-02/0	LENS	1		5136708-01/2	LABEL WARNING ELECTRIC	1	F.B.NL.CH.	
2	5126645-03/4	LABEL COWLING	1		5136712-01/4	LABEL WARNING ELECTRIC	1	I.DK.N.	
3	5126375-10/3	COWL ASSY C/W LENS	1		5137687-00/9	LABEL WARNING ELECTRIC	1	D.F.I.	
	5126375-12/9	COWL ASSY	1	D.	38	5116388-04/1	LEVER UP STOP	1	
4	5146824-00/7	SCREW	4		39	5140423-00/4	PIN RETAINING	2	
5	5116791-00/4	NOISE ABSORBTION JACKET	1		40	5140092-00/7	PIVOT PIN	2	
6	5146828-00/2	FILTER	2		41	5147029-01/0	ROLL PIN	1	
7	5116423-00/4	SUPPORT FILTER	1		42	5147924-11/1	HOOD ASSY 47CM C/W UPSTOP	1	
8	5126891-03/4	SWITCHBOX ASSY	1	GB.E.P.O/S	43	5146309-00/9	WASHER	6	
	5126901-10/6	SWITCHBOX ASSY	1	A.F.B.NL.N.DK.I.	44	5141585-01/7	SCREW 1/4"-20UNC x 25MM LG	6	
	5126902-05/4	SWITCHBOX ASSY	1	CH.	45	5126133-00/7	INSERT IMPELLER	1	
	5126901-11/4	SWITCHBOX ASSY	1	D.	46	5116197-01/2	IMPELLER	1	
9	5146672-00/0	SCREW GKN POLYMATE	2			5116197-04/6	IMPELLER (PEGGED TYPE)	1	D.
10	5126240-00/0	RUNNER CABLE	1	D.A.	47	5136240-01/6	BLADE SPACER	4	
11	5126816-03/1	HANDLE/LABEL ASSY	1	GB.EI.		5136668-01/8	BLADE SPACER PEGGED	1	D.
	5126698-00/9	HANDLE UPPER PLASTIC COATED	1		48	5126434-05/8	BLADE 47CM	1	
12	5140482-00/0	CABLE CLIP SMALL	1		49	5148259-00/4	WASHER ANTI FRICTION PTFE	1	
13	5140863-01/9	CABLE CLIP LARGE	1		50	5137608-00/5	BLADE BOLT C/W PTFE WASHER	1	
14	5140607-00/2	BOLT HANDLE 1/4 UNC x 45LG	2		51	5126682-00/3	SPANNER/SCRAPER ABS	1	
15	5140266-00/7	WASHER	2						
16	5140690-00/8	KNOB WING WHITE	2						
17	5126696-01/1	HANDLE LOWER	1						
18	5126284-03/2	BRAKE 220/240V	1	USE 5126284-83/4					
19	5136241-00/6	DISC WARNING ASSY	1						
20	5148040-00/8	MOTOR 240V	1	GB.					
	5148040-01/6	MOTOR 220V	1						
	5126582-00/5	MOTOR 220V BRAKED	1	D.					
21	322839-01/0	LEAD	2						
22	5146672-00/0	SCREW GKN POLYMATE	2						
23	5140705-00/4	CABLE CLAMP	2						
24	7241293-61/7	SCREW THREAD FORMING	1						
25	322814-00/5	RECTIFIER	1						
26	322812-02/5	INSULATOR	1						
27	323183-00/4	SUPPRESSOR	1						
28	341624-01/3	SCREW M4 x 8 PH RND	1						
29	322827-00/7	WASHER SPRING (PLATED)	1						
30	323410-00/1	CLIP	1						
31	322824-00/4	CARBON BRUSH COMPLETE	2						
32	322819-00/4	BRUSH HOUSING	2						
33	291890-00/2	CABLE CLAMP	1						
34	29100-00/5	WASHER	4						
35	322827-00/7	WASHER SPRING (PLATED)	4						
36	321689-00/2	SCREW M4 x 16 PH PHD.	4						
37	5146467-00/5	LABEL WARNING ELECTRIC	1	GB.O/S.E.P.					

WHERE NO APPLICATION DETAILS ARE SHOWN, PART APPLIES TO ALL COUNTRIES

PRODUCT VARIANT

9634701-25	GB	9634702-74	N.DK.I.	9634702-77	E.P.O/S
9634702-72	F.B.NL.A.	9634702-76	CH	9634702-78	D