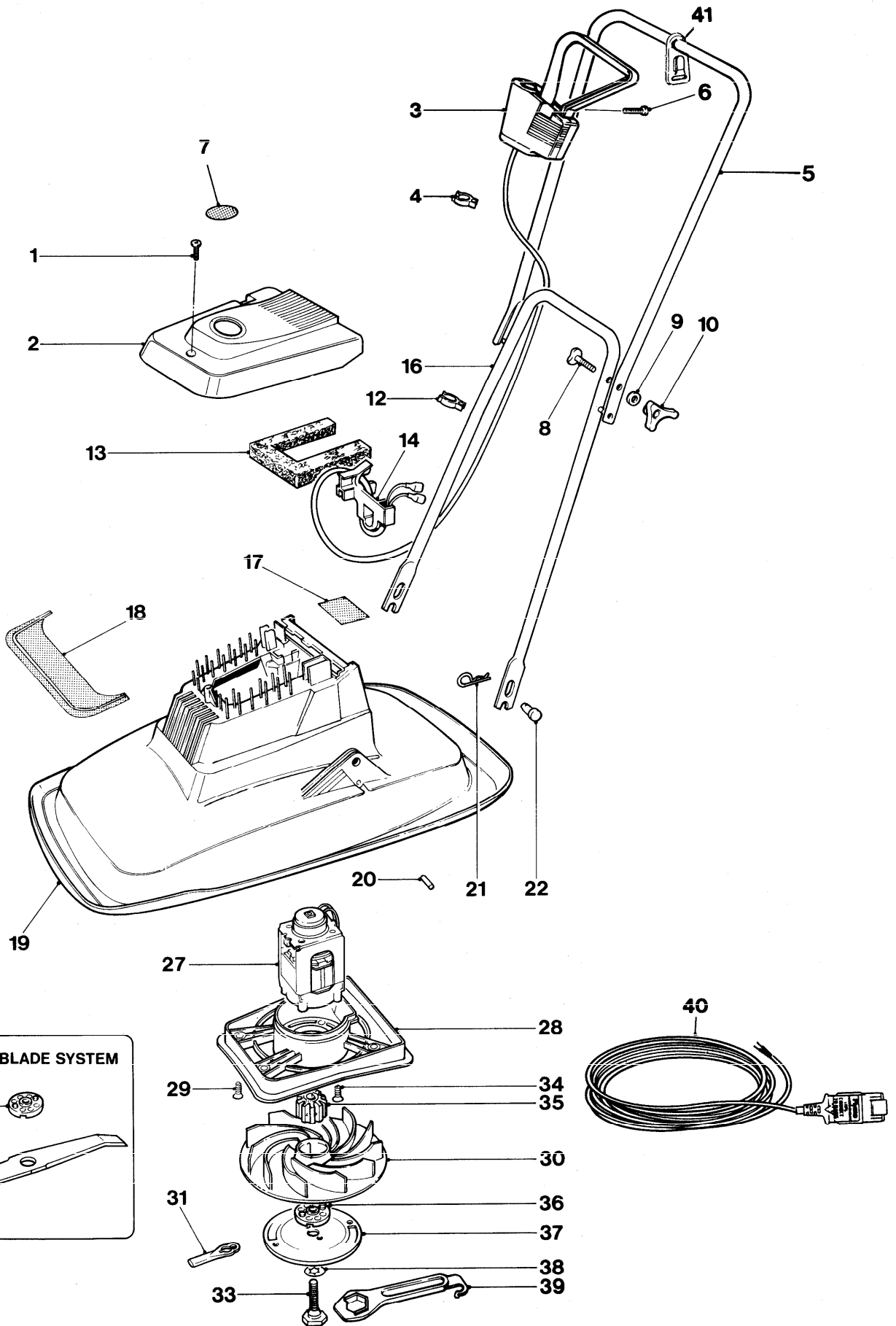




SPRINTER E30-1 TWIN 9633014



**STEEL BLADE SYSTEM**

36

32



# SPRINTER E30-13 TWIN 9633014

| KEY No. | PART No      | DESCRIPTION                  | QUANTITY | COMMENTS<br>APPLICATION |
|---------|--------------|------------------------------|----------|-------------------------|
| 1       | 5146736-00/3 | SCREW HIGH/LOW               | 1        |                         |
| 2       | 5126821-02/3 | COVER ASSY                   | 1        |                         |
| 3       | 5126891-01/8 | SWITCHBOX ASSY               | 1        | GB.EI.                  |
|         | 5126901-07/2 | SWITCHBOX (EUROPE)           | 1        | D.                      |
| 4       | 5137750-00/5 | CLIP CABLE                   | 1        |                         |
| 5       | 5126816-02/3 | HANDLE/LABEL ASSY            | 1        |                         |
| 6       | 5146672-00/0 | SCREW GKN POLYMATE           | 2        |                         |
| 7       | 5137855-00/2 | LABEL AUTOSTOP               | 1        |                         |
| 8       | 5140607-00/2 | BOLT HANDLE ¼ UNC x 45LG     | 2        |                         |
| 9       | 5140266-00/7 | WASHER                       | 2        |                         |
| 10      | 5140690-00/8 | KNOB WING WHITE              | 2        |                         |
| 11      | 5116985-01/0 | CABLE TIDY                   | 1        |                         |
| 12      | 5137750-00/5 | CLIP CABLE                   | 1        |                         |
| 13      | 5137638-00/2 | FILTER                       | 1        |                         |
| 14      | 5126741-00/7 | CLAMP PLASTIC                | 1        |                         |
| 16      | 5117082-00/7 | HANDLE LOWER                 | 1        |                         |
| 17      | 5146467-00/5 | LABEL WARNING ELECTRIC       | 1        | GB.                     |
|         | 5136507-00/0 | LABEL WARNING ELECTRIC       | 1        | D.                      |
| 18      | 5126885-00/2 | LABEL FLYMO                  | 1        |                         |
| 19      | 5126819-01/9 | HOOD 30CM                    | 1        |                         |
| 20      | 5147594-00/5 | PIN                          | 2        |                         |
| 21      | 5140423-00/4 | PIN RETAINING                | 2        |                         |
| 22      | 5140092-00/7 | PIVOT PIN                    | 2        |                         |
| 27      | 5126928-01/8 | MOTOR BRAKED 240V KS4642/200 | 1        | GB.                     |
|         | 5126928-02/6 | MOTOR BRAKED 220V            | 1        | D.EI.                   |
| 28      | 5106279-00/2 | MOTOR MOUNTING PLATE         | 1        |                         |
| 29      | 5146736-00/3 | SCREW HIGH/LOW               | 4        |                         |
| 30      | 5116967-10/9 | IMPELLER                     | 1        |                         |
| 31      | 5148257-02/4 | CUTTER PLASTIC LONG LIFE     | 2        |                         |
| 32      | 5126439-00/8 | BLADE 30CM                   | 1        |                         |
| 33      | 5137608-00/5 | BLADE BOLT C/W PTFE WASHER   | 1        |                         |
| 34      | 5148122-01/2 | SCREW PLASTITE 10 x 19MM LNG | 4        |                         |
| 35      | 5126764-00/9 | INSERT-PLASTIC               | 1        |                         |
| 36      | 5136668-01/8 | BLADE SPACER PEGGED          | 1        |                         |
| 37      | 5126734-01/0 | DISC ASSY                    | 1        |                         |
| 38      | 5148259-00/4 | WASHER ANTI FRICTION PTFE    | 1        |                         |
| 39      | 5126682-00/3 | SPANNER/SCRAPER ABS          | 1        |                         |
| 40      | 5126890-01/0 | CABLE EXTENSION              | 1        | GB.EI.                  |
| 41      | 5126240-00/0 | RUNNER CABLE                 | 1        | D.EI.                   |

WHERE NO APPLICATION DETAILS ARE SHOWN PART APPLIES TO ALL COUNTRIES

PRODUCT VARIANT

9633014-25 GB            9633015-78 D.  
9633015-18 EI.