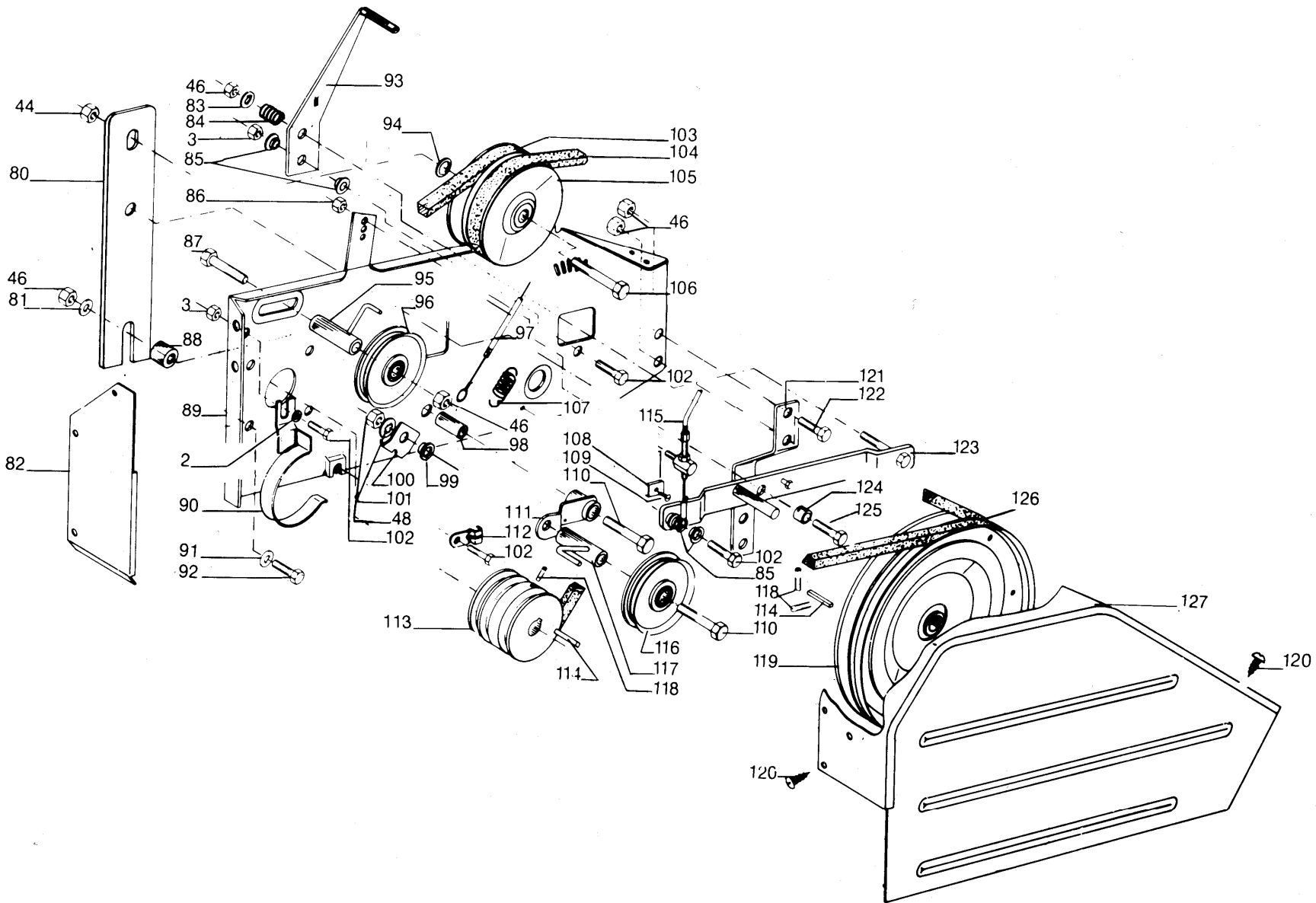




GTM 9645140

KEY No.	PART No.	DESCRIPTION	QUANTITY	COMMENTS/ APPLICATION	KEY No.	PART No.	DESCRIPTION	QUANTITY	COMMENTS/ APPLICATION
1	515700840-00/9	BOLT	1		48	515772012-00/8	WASHER SPRING	2	
2	515768012-00/4	WASHER BASE	9		49	515796002-00/1	WASHER	4	
3	515763008-00/7	NUT LOCK	3		50	515202593-00/7	WHEEL ASSY	2	
4	51570066-00/1	SCREW	2		51	515105254-00/4	SPACER	2	
5	515768010-00/8	WASHER	2		52	515700080-00/2	BOLT (SHAFT)	2	
6	515118336-00/4	CABLE GUIDE	1		53	9971005-10/4	SINGLE ALT USE 515212953-00/1	4	
7	515756006-00/0	NUT	2		54	515500324-Q0/6	ROTOR PIN	8	
8	515213255-00/0	EXHAUST ELBOW	1		55	515101510-00/3	SHAFT EXT (PAIRS)	2	
9	515123324-00/3	SCREW	2		56	515109056-00/9	BEARING	1	
10	515772007-00/8	WASHER	10		57	515104136-00/4	PLUG OIL	1	
11	515115068-00/6	GASKET	1		58	515700070-00/3	BOLT	1	
12	515120043-00/2	PIN LOCK-OFF	1		59	515211469-00/9	CHAIN CASE R/H	1	
13	515120074-00/7	PIN	2		60	515138717-00/1	GASKET	3	
14	515139761-00/8	LEVER CLUTCH	2		61	515115045-00/4	SEAL	2	
15	515116058-00/6	SNAP RING	2		62	515109039-00/5	BEARING NEEDLE	2	
16	515213580-00/1	HANDLE UPPER	1		63	515701612-00/1	BOLT	25	
17	515118169-00/9	HOOK COUPLING	2		64	515113011-00/8	CHAIN C/W LINK	1	
18	515202123-00/3	CABLE	1		65	515113008-00/4	CHAIN C/W LINK	1	
19	515118193-00/9	SPRING	1		66	515109040-00/3	BEARING	2	
20	515104121-00/6	GRIP PLASTIC	2		67	515113010-00/0	CHAIN C/W LINK	1	
21	515213584-00/3	SCREW HNDLE LOCKING	1		68	515213450-00/7	AXLE	1	
22	515796011-00/2	WASHER	1		69	515212955-00/6	SPROCKET	1	
23	515118457-00/8	WASHER SPRING	1		70	515212956-00/4	SPROCKET	1	
24	515139625-00/5	LOCK PLATE	1		71	515212243-00/7	SPROCKET	1	
25	515711820-00/8	SCREW LOCK	1		72	515105487-00/0	SPACER	2	
26	515107259-00/1	BRACKET	1		73	515139767-00/5	WASHER	1	
27	515104479-00/8	PLUG	1		74	515115042-00/1	GASKET	1	
28	515202135-00/7	FORWARD DRIVE CABLE	1		75	515109053-00/6	BEARING	1	
29	515213281-00/6	PEDAL	1		76	515115057-00/9	SEAL	1	
30	515118330-00/7	SPRING PEDAL	1		77	515211468-00/1	CHAIN CASE L/H	1	
31	515202112-00/6	THROTTLE CONTROL COMPLETE	1	NLA USE 515202116-00/7	78	515763010-00/3	NUT	1	
32	515213893-00/8	HANDLE COLUMN	1		79	515763006-00/1	NUT	25	
33	515790022-00/5	BOLT TENSION	1						
34	515107180-00/9	SHAFT	1						
35	515701830-00/9	BOLT	4						
36	515104457-00/4	FERRULE PLASTIC	1						
37	515105691-00/7	PROTECTION BAR	1						
38	515140499-00/2	STONE GUARD	1						
39	515135164-00/9	ARRESTER BAR	1						
40	515137366-00/8	BOLT ARRESTER BAR	2	NLA USE 515118587-00/2 SPRING AND 5169069-00/1 BOLT					
41	515212799-00/8	TRANSPORT WHEEL BRACKET	1						
42	515700070-00/3	BOLT	1						
43	515213284-00/0	HANDLE COLUMN LOWER	1						
44	515118343-00/0	SPRING DISC	1						
45	515763012-00/9	NUT	2						
46	515763010-00/3	NUT	2						
47	515756010-00/2	NUT	3						





GTM 9645140

KEY No.	PART No.	DESCRIPTION	QUANTITY	COMMENTS/ APPLICATION
80	515135202-00/7	BRACKET	1	
81	515796003-00/9	WASHER	1	
82	515139407-00/8	PLATE	1	
83	515768013-00/2	WASHER BASE	1	
84	515118275-00/4	SPRING	1	
85	515139754-00/3	WASHER (SPACER)	3	
86	515762006-00/2	NUT	1	
87	515700075-00/2	BOLT	1	
88	515105398-00/9	BUSH	1	
89	515213190-00/9	COVER	1	
90	515213194-00/1	BELT GUIDE	1	
91	515772009-00/4	WASHER SPRING	1	
92	515123201-00/3	BOLT	1	
93	515211464-00/0	BRACKET	1	
94	515768014-00/0	WASHER	1	
95	515213197-00/4	BELT GUIDE	1	
96	515213305-00/4	TENSIONER	1	
97	515202135-00/7	FORWARD DRIVE CABLE	1	
98	515105168-00/6	SLEEVE	1	
99	515139765-00/9	WASHER	1	
100	515139839-00/2	BRACKET	1	
101	515777016-00/4	WASHER	1	
102	515701816-00/8	BOLT	4	
103	515112033-00/3	BELT	1	(1st FORWARD)
104	515112034-00/1	BELT	1	(2nd FORWARD)
105	515211390-00/7	PULLEY	1	
106	515791010-00/9	BOLT	1	
107	515118153-00/3	SPRING	1	
108	515139086-00/0	CLAMP	1	
109	515745031-00/2	SCREW	1	
110	515700055-00/4	BOLT	2	
111	515213114-00/9	BRACKET	1	
112	515139560-00/4	CLIP	1	
113	515137365-00/0	ENGINE PULLEY	1	
114	515117009-00/8	KEY	2	
115	515202123-00/3	CABLE	1	
116	515212305-00/4	TENSIONER	1	
117	515213192-00/5	BELT GUIDE	1	
118	515739812-00/3	SCREW	3	
119	515213180-00/0	PULLEY	1	
120	515745030-00/4	SCREW	4	
121	515135225-00/8	BRACKET	1	
122	515701020-00/7	SCREW	2	
123	515213350-00/9	BRACKET	1	
124	515105483-00/9	BUSH	1	
125	515701016-00/5	BOLT	1	
126	515112010-00/1	BELT	1	(REVERSE)
127	515213646-00/0	COVER	1	
128	515211412-00/9	CHAIN CASE ASSY COMPLETE	1	NOT ILLUSTRATED