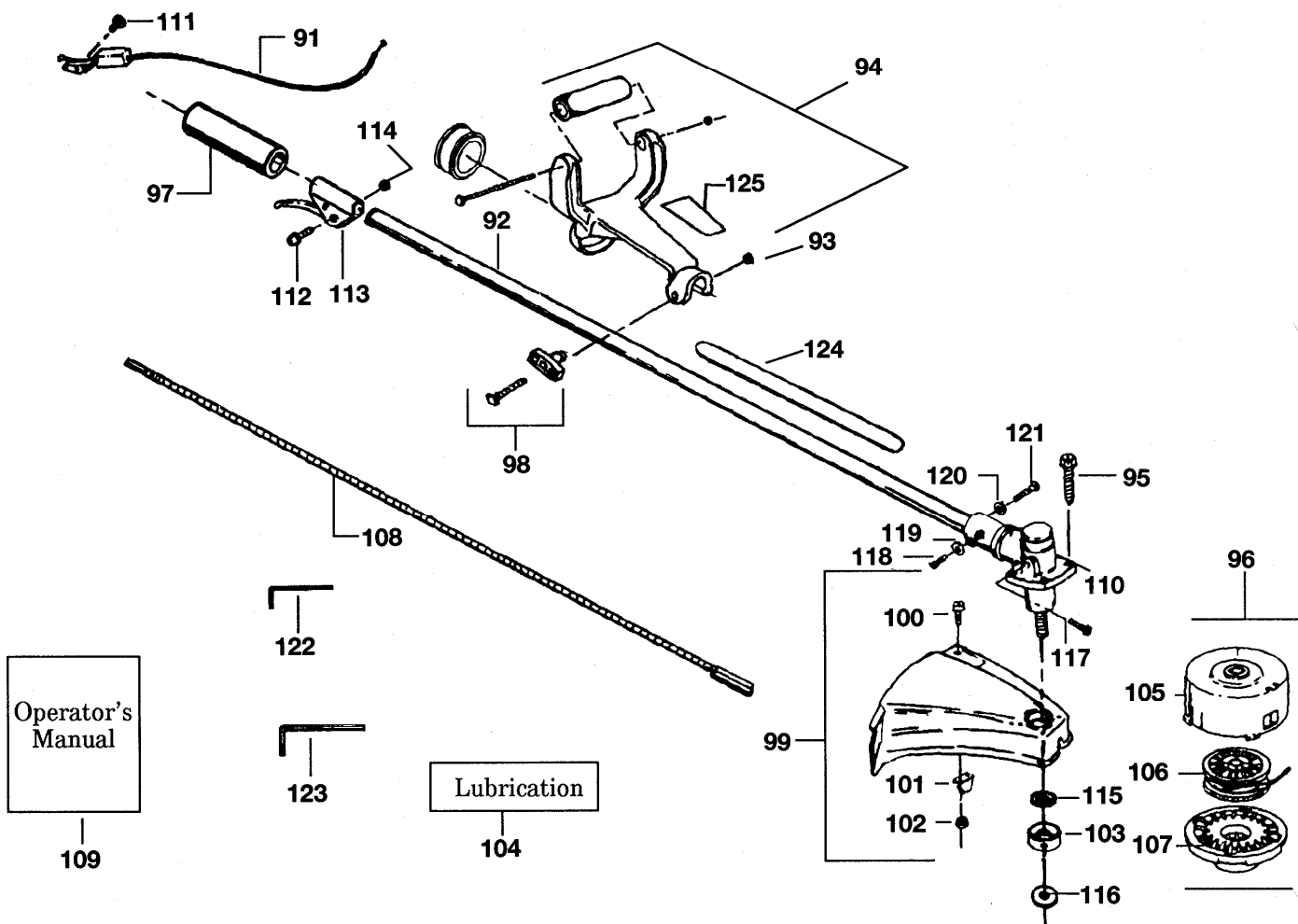




# MAXI-TRIM SUPER 9527034-05

KEY No.	PART No	DESCRIPTION	QUANTITY	COMMENTS APPLICATION	KEY No.	PART No	DESCRIPTION	QUANTITY	COMMENTS APPLICATION
1	5300157-73/1	SCREW	2		46	5300391-34/8	MODULE	1	
2	5300275-29/3	AIR FILTER COVER	1		47	5300157-76/4	SCREW	2	
3	5300275-30/1	AIR FILTER	1		48	5300122-35/4	CYLINDER	1	
4	5300157-66/5	SCREW	2		49	5300300-77/8	SPARK PLUG	1	
5	5300275-28/5	SPACER	1		50	5300157-68/1	NUT	1	
6	5300152-54/2	WAVE WASHER	1		51	5300391-36/3	FLYWHEEL	1	
7	5300275-26/9	SHUTTER	1		52	5300275-72/3	COUNTERWEIGHT	1	
8	5300275-27/7	PLATE	1		53	5300275-17/8	FAN HOUSING ASSY	1	
9	5300692-47/1	LINE KIT	1		54	5300692-91/9	STARTER PULLEY KIT	1	(INCL.45)
10	5300108-97/3	FUEL PICKUP ASSY	1		55	5300275-31/9	STARTER SPRING	1	
11	5300352-59/7	CARBURETOR	1		56	5300275-69/9	STARTER HANDLE	1	
12	5300191-56/5	GASKET	1	▲	57	5300109-61/7	PULLEY HOUSING	1	
13	5300107-29/8	FUEL CAP ASSY	1		58	5300941-89/4	WASHER	1	
14	5300290-15/1	SHROUD	1	(INCL.9.10.13)	59	5300692-54/7	CLUTCH KIT	1	
15	5300191-54/0	GASKET	1	▲	60	5300109-64/1	CLUTCH HOUSING	1	
16	5300275-93/9	REED VALVE	1		61	5300157-67/3	SCREW	1	
17	5300275-94/7	REED STOP	1		62	5300275-11/1	SPACER	1	
18	5300140-15/8	CRANKCASE/SHAFT ASSY	1	(INCL.20.21.28)	63	5300157-70/7	SCREW	4	
19	5300109-60/9	CONNECTING ROD	1	(INCL.BEARINGS)	64	5300157-69/9	SCREW	4	
20	5300157-89/7	RETAINING RING	1		65	5300154-96/9	SCREW	1	
21	5300109-34/4	CRANKSHAFT	1		66	5300157-88/9	SPACER	1	
22	5300151-26/2	KEY	1		67	5300157-96/2	WASHER	1	
23	5300157-72/3	SCREW	1		68	5300017-33/1	NUT	1	
24	5300157-80/6	SCREW	1		69	5300351-64/9	GASKET	1	● ■
25	5300275-46/7	INSULATOR	1		70	5300351-66/4	DIAPHRAGM	1	● ■
26	5300275-47/5	WIRE	1		71	5300351-78/9	SCREEN	1	●
27	5300157-71/5	SCREW	1		72	5300351-06/0	INLET NEEDLE VALVE	1	●
28	5300140-16/6	CRANKCASE	1	(INCL.36-39)	73	5300351-88/8	METERING LEVER SPRING	1	●
29	5300275-45/9	RAMP	1		74	5300350-31/0	LEVER METERING	1	●
30	5300275-43/4	SPRING	1		75	5300350-28/6	PIN METERING	1	●
31	5300152-41/9	SCREW	1		76	5300350-14/6	DIAPHRAGM	1	● ■
32	5300151-62/7	PIN TETAINDER	1		77	5300351-51/6	GASKET METERING	1	● ■
33	5300258-75/2	RING PISTON	1		78	5300351-47/4	GASKET	1	● ■
34	5300191-61/5	GASKET	1		79	5300350-36/9	SPRING	1	
35	5300692-75/2	PISTON KIT	1	▲ (INCL.32.33 & PIN)	80	5300351-42/5	HIGH SPEED NEEDLE	1	
36	5300321-03/0	BEARING	1		81	5300351-41/7	IDLE NEEDLE	1	
37	5300157-87/1	RETAINING RING	1		82	5300350-23/7	SPRING	1	
38	5300191-58/1	SEAL	1		83	5300352-08/4	SPRING	1	
39	5300321-02/2	BEARING	1		84	5300352-03/5	SCREW	1	
40	5300692-32/3	ROPE KIT	1		85	5300352-60/5	CARB. KIT	1	(● INDICATES CONTENTS)
41	5300157-77/2	SCREW	1		86	5300351-85/4	GASKET KIT	1	(■ INDICATES CONTENTS)
42	5300275-23/6	RETAINER	1		87	5300692-76/0	GASKET KIT	1	(▲ INDICATES CONTENTS)
43	5300692-57/0	MUFFLER KIT	1		88	5300152-39/3	SCREW	1	
44	5300249-03/3	SPRING	1		89	5300157-17/8	SCREW	2	
45	5300158-23/4	SCREW	1		90	5300277-81/0	GUARD	1	

N.B. WHERE A FAILURE OCCURS WITHIN WARRANTY, WHICH WOULD INVOLVE REPLACING ANY MAJOR ENGINE PARTS, YOU MUST FIRST CONTACT: FLYMO TECHNICAL SERVICE DEPARTMENT TO GAIN SPECIAL AUTHORIZATION.




**MAXI-TRIM SUPER 9527034-05**

KEY No.	PART No	DESCRIPTION	QUANTITY	COMMENTS APPLICATION
91	5300275-49/1	THROTTLE CABLE	1	
92	5300946-42/2	DRIVESHAFT HSG	1	
93	5300151-97/3	NUT	1	
94	5300109-58/3	HANDLE	1	
95	5300157-90/5	SCREW	4	
96	<del>5300945-99/4</del>	HEAD ASSY	1	(INCL.105.106.107) 9527016-08/4
97	5300275-95/4	GRIP	1	
98	5300692-52/1	T HANDLE KIT	1	
99	5300692-56/2	SHIELD ASSY	1	(INCL.100.101.102)
100	5300153-37/5	SCREW	2	
101	5300945-70/5	LINE LIMITER	1	
102	5300152-17/9	NUT	1	
103	5300946-39/8	DUST CUP	1	
104	5300301-02/4	GREASE ½ FL.OZ	1	
105	5300945-57/2	HUB ASSY	1	
106	5300945-39/0	GREY SPOOL	1	
107	5300944-94/8	COVER	1	
108	5300945-85/3	DRIVESHAFT	1	
109	5300673-86/9	OPERATORS MANUAL	1	
110	5300945-68/9	GEAR BOX ASSY	1	
111	5300157-75/6	SCREW	1	
112	5300157-74/9	SCREW	1	
113	5300109-59/1	THROTTLE LEVER ASSY	1	(INCL.112.114)
114	5300157-68/1	NUT	1	
115	5300946-40/6	SEAL	1	
116	5300945-71/3	WASHER	1	
117	5300946-16/6	SCREW	1	
118	5300946-12/5	SCREW	1	
119	5300153-28/4	LOCKWASHER	1	
120	5300016-77/0	LOCKWASHER	1	
121	5300017-11/7	SCREW	1	
122	5300311-11/4	HEX WRENCH	1	
123	5300310-98/3	HEX WRENCH	1	
124	5300274-30/4	DECAL SHAFT WARNING	1	
125	5300291-85/2	DECAL ANTI VIBE HANDLE	1	