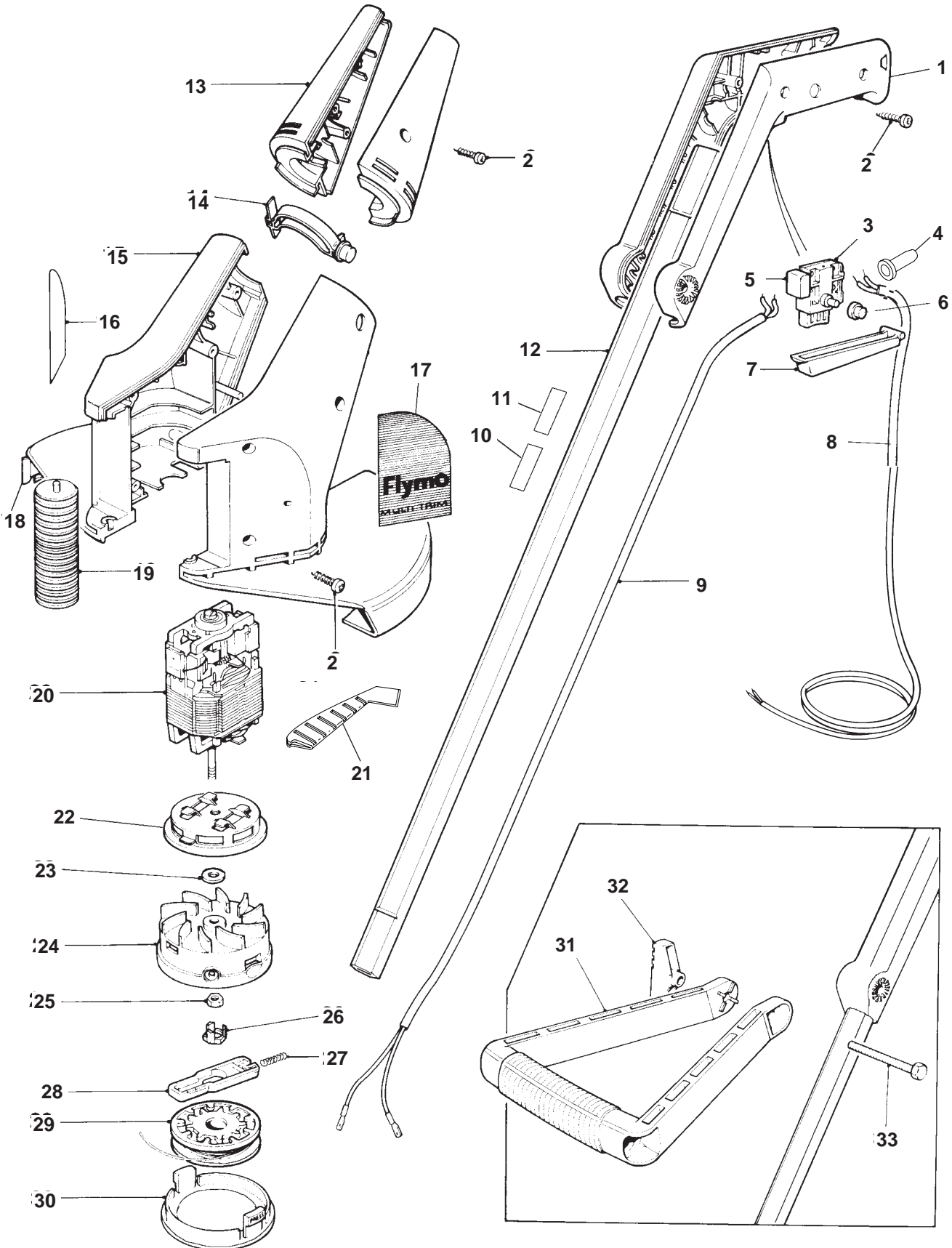


MODEL	Multi trim 250
PRODUCT NO.	9648518; 9648519, 9648527



MODEL	Multi trim 250
PRODUCT NO.	9648518; 9648519, 9648527



KEY	PART NUMBER	DESCRIPTION	QTY
01	5149206-03/8	HANDLES,PAIR OF	1
02	5146672-00/0	SCREW	10
03	5137630-03/3	SWITCH	1 GB.EI.AUS.F.I.E.P.B.NL.D.
	5138074-01/7	SWITCH	1 CH.DK.S.SF.N.A.
04	5148741-01/9	PROTECTION SLEEVE	1 CH.
05	5148397-01/0	CAPACITOR	1
06	5148253-01/5	LOCK OFF COVER	1
07	5137609-02/9	SWITCH LEVER	1
08	5127251-01/4	LEAD ASSY	1 GB.EI.
	5147000-03/7	LEAD ASSY	1 CH.
	5148282-02/2	LEAD ASSY	1 F.I.E.P.DK.S.SF.N.A.B.NL.D.
	5138270-00/3	LEAD ASSY	1 AUS
09	5137632-01/3	LEAD,INTERNAL	1 GB.EI.F.I.E.P.DK.S.SF.N.A.B.NL.D.AUS.
	5137632-00/5	LEAD,INTERNAL	1 CH
10	5126906-01/4	LABEL,WARNING	1 GB.EI.AUS.
	5126906-03/0	LABEL,WARNING	1 N.A.F.B.NL.D.CH.
	5126906-06/3	LABEL,WARNING	1 DK.S.SF.
	5127351-04/6	LABEL,WARNING	1 F.I.E.P.
11	5127351-01/2	LABEL,WARNING	1 F.I.E.P.CH.
	5127351-02/0	LABEL,WARNING	1 F.B.NL.D.
	5127351-03/8	LABEL,WARNING	1 DK.S.SF.
	5126906-05/5	LABEL,WARNING	1 N.A.
12	5126981-68/6	HANDLE TUBE	1
13	5148915-00/1	SWIVELS,PAIR OF	1
14	5137842-01/8	LOCK BUTTON,SWIVEL	1
15	5149334-01/2	CLAMSHELLS,KIT	1
16	5149022-01/3	LABEL,R/H	1
17	5149022-02/1	LABEL,L/H	1
18	5148353-00/5	LINE CUTTER	1
19	5148323-01/6	ROLLER	1
20	5126994-02/8	MOTOR	1
21	5126913-00/2	SCRAPER	1
22	5126903-00/3	SPLASHPROOF RING	1 N.A.
23	7341153-01/8	WASHER	1
24	5148621-01/3	HEAD FERRULE ASSY	1
25	5148683-00/5	NUT	1
26	5148631-00/4	INSULATION CAP	1
27	5148940-00/9	SPRING	1
28	5127198-00/9	LINE FEEDER	1
29	5137651-01/3	SPOOL & LINE	1
30	5126976-00/9	SPOOL COVER	1
31	5117312-01/6	HANDLE ASSIST	1
32	5137679-00/6	WING KNOB	1
33	5149140-00/5	HEX BOLT	1

PRODUCT APPLICATION

9648518-25	GB.EI.	9648519-33	DK.S.SF.	9648527-25	GB.EI.	9648527-83	F.B.NL.D.
9648518-99	AUS.	9648519-82	N.A.	9648527-32	F.I.E.P.		
9648519-22	CH.	9648519-83	F.B.NL.D.	9648527-33	DK.S.SF.		
9648519-32	F.I.E.P.	9648527-22	CH.	9648527-82	N.A.		

WHERE NO APPLICATION DETAILS ARE SHOWN, PART APPLIES TO ALL COUNTRIES

A Austria; AUS Australia; B Belgium; CND Canada; CH Switzerland; D Germany; DK Denmark; E Spain; EI Eire; F France; GB Great Britain; I Italy; N Norway; NL Netherlands; NZ New Zealand; O/S Overseas; P Portugal; S Sweden; SF Finland; USA America; ZA South Africa