

REPAIR PARTS MANUAL

MODEL NUMBER 25345

Rotary Lawn Mower

CRAFTSMAN®

CRAFTSMAN ROTARY LAWN MOWER - - MODEL NUMBER 25345 (253450)

KEY NO.	PART NO.	DESCRIPTION	KEY NO.	PART NO.	DESCRIPTION	KEY NO.	PART NO.	DESCRIPTION
1	194203X479	Upper Handle	33	151889	Mulcher Door	59	191574	Handle Bolt
2	175148	Engine Zone Control Cable	34	401629	Spacer	61	73930600	Locknut, Hex
3	750634	Screw	35	407501X005	Bracket, Wheel Adjuster	62	405843	Debris Shield
4	850733X004	Bracket, Upstop	36	154132	Bracket, Housing	63	192325	Screw
5	66426	Wire Tie	38	176509	Deflector, Discharge	64	---	Engine, Briggs & Stratton, Model Number 10T802- 1165-B1 (order parts from Briggs & Stratton)
6	189713X428	Handle Knob	41	150406	Screw, Hex Head, Threaded, Rolled 3/8-16 x 1-1/8			
8	194199X428	Control Bar	42	152124	Spring, Torsion	72	197991	Clip, Cable
9	153282X479	Support Bracket, Handle, LH	43	73800400	Locknut, Hex 1/4-20	--	404764	Warning Decal (not shown)
10	170345X479	Handle Bracket Assembly, RH	44	404762	Kit, Mower Housing (Includes Key Number 52)	--	425776	Operator's Manual, European
11	153350X479	Support Bracket, Handle, RH	45	147286	Rod, Hinge	--	425777	Operator's Manual, Scandinavian
12	170346X479	Handle Bracket Assembly, LH	46	195963	Blade Adapter / Pulley	--	425779	Operator's Manual, East Bloc
14	149741	Screw, Thread Cutting 5/16-18 x 3/4	47	199379	Blade, 22"	--	425778	Operator's Manual, Baltic
18	132004	Locknut, Keps	48	851074	Washer, Hardened	--	425775	Repair Parts Manual, English
19	194788	Rope Guide	49	850263	Washer, Lock, Helical			
20	154147	Footguard	50	851084	Screw, Hex Head 3/8-24 x 1-3/8 (Grade 8)			
24	69180	Nut, Hex, with Lockwasher Insert #10-24	52	182166	Decal, Danger			
25	409148	Locknut, Hex 3/18-16	55	188839X004	Mounting Bracket, Debris Shield			
27	400246X427	Wheel & Tire Assembly	56	85825	Screw, Self-Tapping #10-24 x 1			
28	174719	Shoulder Bolt	57	51793	Hairpin Cotter			
29	401630	Washer, Curved, Cylindrical	58	151590X479	Lower Handle			
30	401179X004	Axle Arm Assembly						
31	87877	Knob, Selector						
32	401624X004	Spring, Selector						

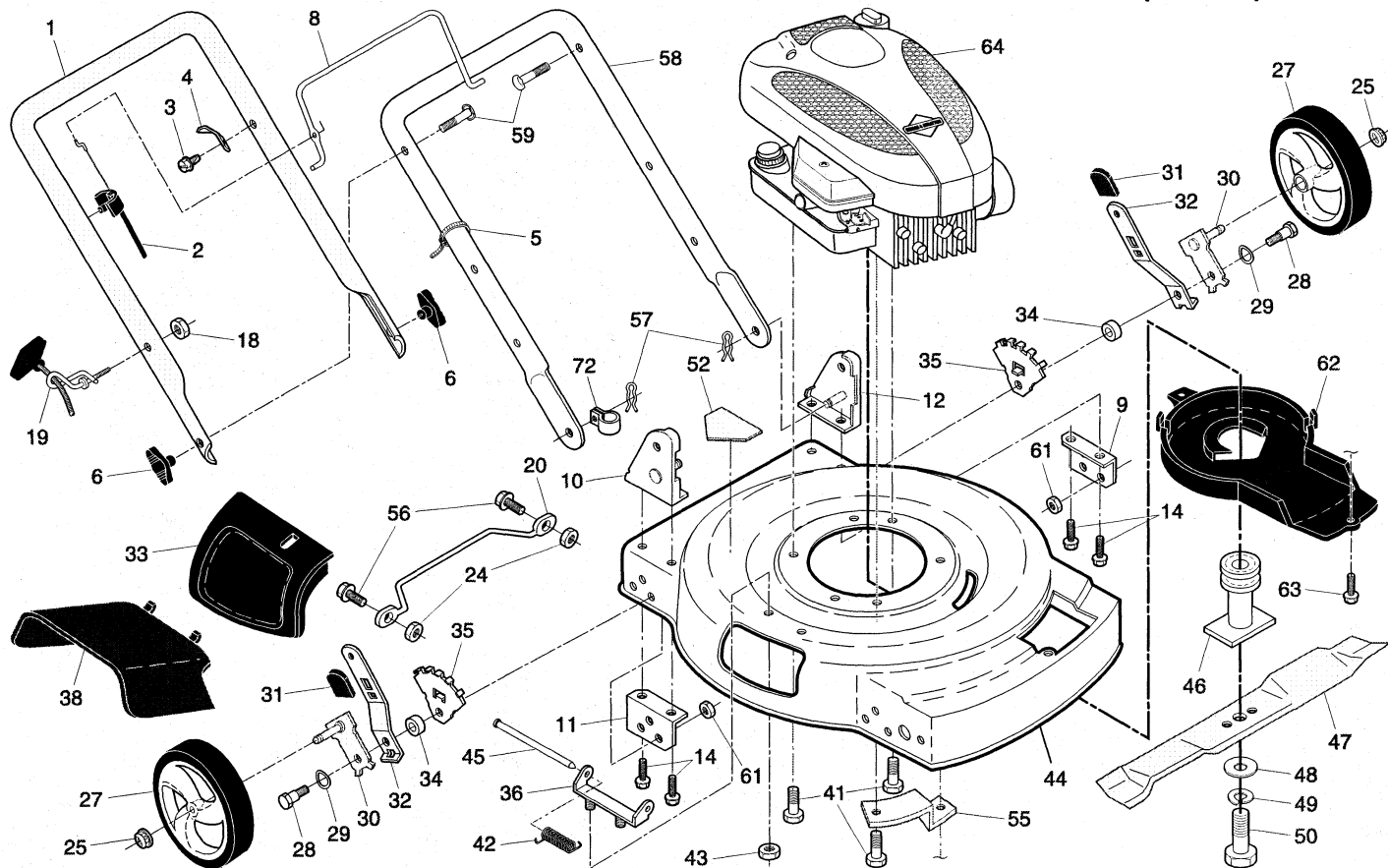
Available accessories not included with mower:

--	71	33623	Gas Can (2.5 Gallon container)
--	71	33500	Fuel Stabilizer
--	71	33000	SAE 30W Oil (20 Ounce bottle)

NOTE: All component dimensions given in U.S. inches. 1 inch = 25.4 mm.

IMPORTANT: Use only Original Equipment Manufacturer (O.E.M.) replacement parts. Failure to do so could be hazardous, damage your lawn mower and void your warranty.

CRAFTSMAN ROTARY LAWN MOWER - - MODEL NUMBER 25345 (253450)



[illegible]

CRAFTSMAN ROTARY LAWN MOWER - - MODEL NUMBER **25345** (253450)

KEY NO.	PART NO.	DESCRIPTION
1	194653	Drive Control Cable Assembly
2	191039	Bearing, Wheel Adjuster
3	143603	Pan Head Tapping Screw #10-24 x 2-3/4
5	146527	V-Belt
6	150495	Spring Retainer
7	194185X428	Control Bar, Drive
9	409148	Locknut, Hex
11	194231X427	Wheel & Tire Assembly
12	12000058	E-Ring
13	403849	Pinion
14	189403	Dust Cover

KEY NO.	PART NO.	DESCRIPTION
15	404845	Pawl, Drive
16	67725	Washer
18	87877	Selector Knob
28	194398X428	Drive Cover
35	408862	Kit, Wheel Adjuster, LH (Includes Knob and Bearing)
36	415226	Gear Case Assembly, Complete
38	73800400	Locknut, Hex 1/4-20
40	137090	Spring
41	408861	Kit, Wheel Adjuster, RH (Includes Knob and Bearing)

LIMITED 2-YEAR WARRANTY ON CRAFTSMAN POWER MOWER

When used and maintained according to the operator's manual instructions, if this power mower fails due to a defect in material or workmanship within two years from the date of purchase, return it to any Sears store, Parts & Repair Center, or other Craftsman outlet for free repair.

Warranty coverage does not include:

- Expendable items that become worn during normal use, including but not limited to blade, blade adapters, spark plug, air cleaner and belts.
- Standard maintenance servicing, oil changes, or tune-ups.
- Repairs necessary because of operator abuse, including but not limited to damage caused by impacting objects that bend the frame or crankshaft, or over-speeding the engine.
- Repairs necessary because of operator negligence, including but not limited to damage caused by improper storage, or failure to maintain the equipment according to the instructions contained in the operator's manual.
- Engine (fuel system) cleaning or repairs necessary because of fuel determined to be contaminated or oxidized (stale). In general, fuel should be used within 30 days of its purchase date.
- Normal deterioration and wear of the exterior finishes, or product label replacement.

This warranty applies for only 90 days if this product is used for commercial or rental purposes.

This warranty applies only while this product is within the United States.

This warranty gives you specific legal rights, and you may also have other rights, which vary, from state to state.

Sears, Roebuck and Co., Dept. 817WA, Hoffman Estates, IL 60179

CRAFTSMAN®