

# **REPAIR PARTS MANUAL**

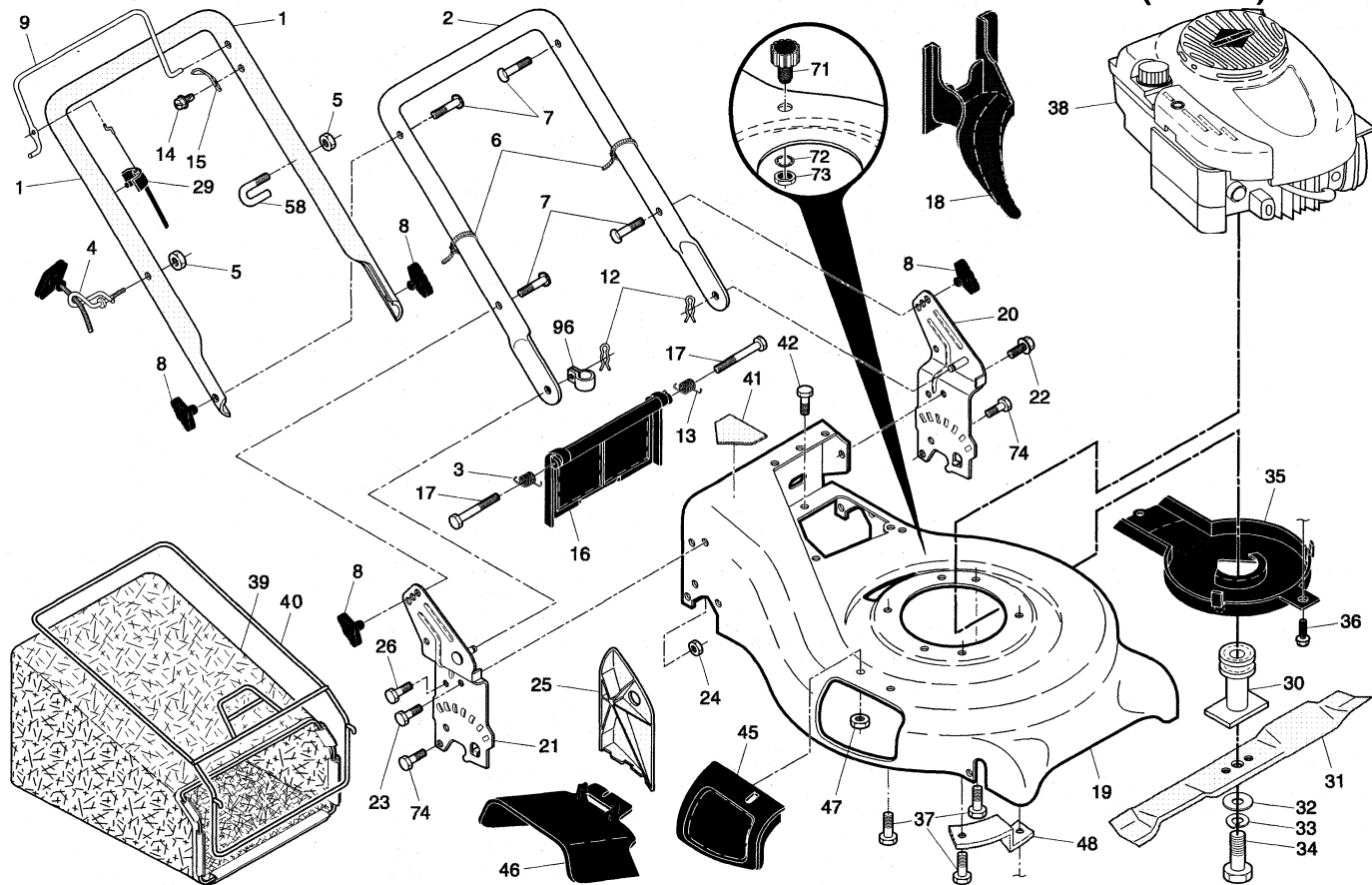
## **MODEL NUMBER 25343**

### **Rotary Lawn Mower**

---

**CRAFTSMAN®**

**CRAFTSMAN ROTARY LAWN MOWER - - MODEL NUMBER 25343 (253430)**



# CRAFTSMAN ROTARY LAWN MOWER - - MODEL NUMBER **25343 (253430)**

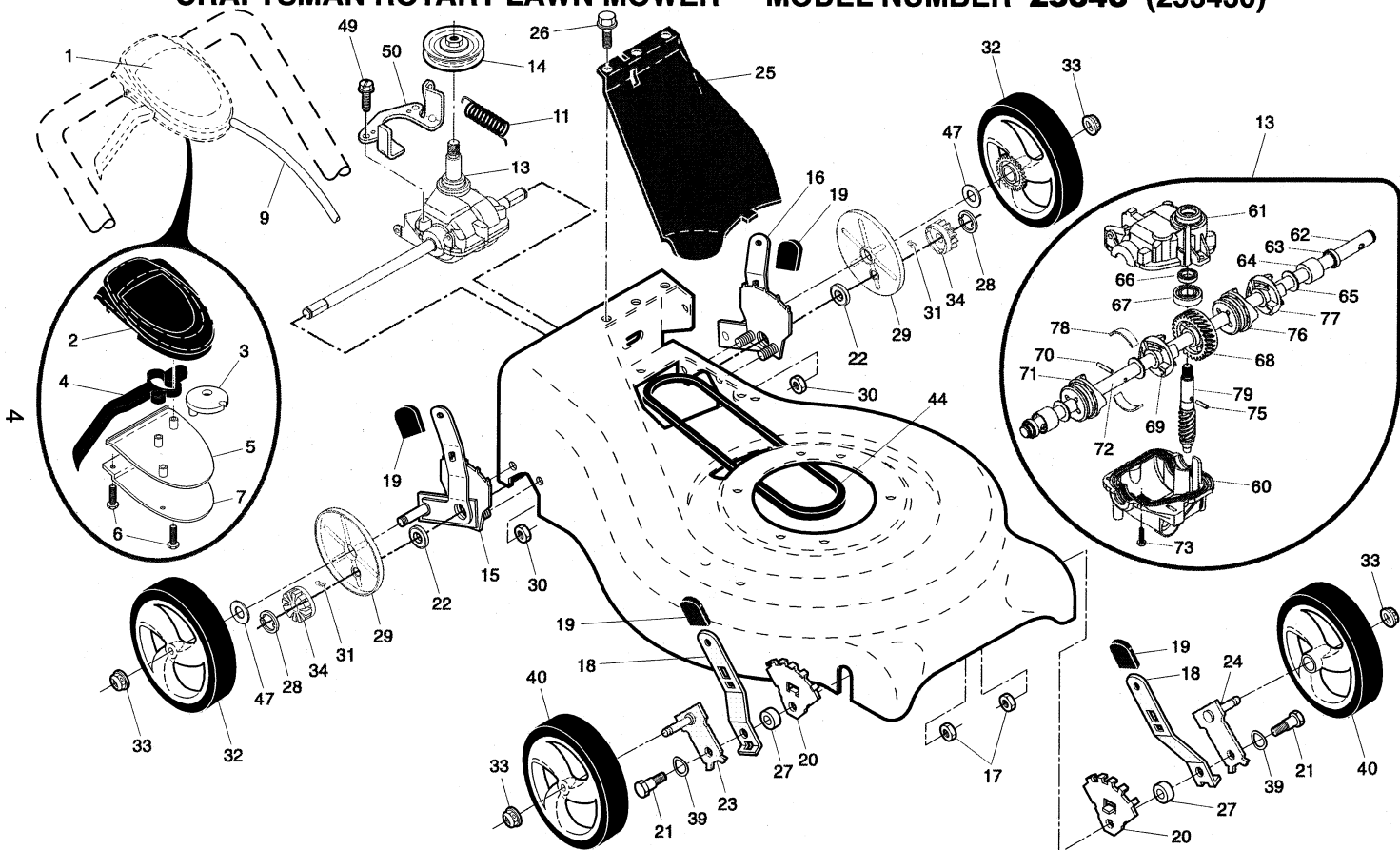
KEY NO.	PART NO.	DESCRIPTION	KEY NO.	PART NO.	DESCRIPTION	KEY NO.	PART NO.	DESCRIPTION
1	194579X479	Handle, Upper	25	161333	Baffle, Side	58	182003	Clip, Packaging
2	193664X479	Handle, Lower	26	163409	Screw, Hi-Lo Thread	71	419735	Fitting, Water Washout
3	405416	Spring, Rear Door, RH			#12 x 5/8	72	415585	Washer, Lock, Internal Tooth
4	194788	Rope Guide	29	191221	Cable, Operator Presence	73	415586	Locknut, Hex, with O-Ring
5	132004	Nut, Hex, with Lockwasher Insert 1/4-20	30	189179	Blade Adapter / Pulley	74	17060410	Screw 1/4-20 x 5/8
6	66426	Wire, Tie	31	199377	Blade, 21"	96	197991	Clip, Cable
7	191574	Bolt, Handle 5/16-18 x 2-5/8	32	851074	Washer	--	420281	Operator's Manual, European
8	189713X428	Knob, Handle	33	850263	Washer, Lock	--	420282	Operator's Manual, Scandinavian
9	194580X428	Control Bar	34	851084	Bolt, Hex Head	--	420283	Operator's Manual, East Bloc
12	51793	Cotter, Hairpin	35	405843	Debris Shield	--	420284	Operator's Manual, Baltic
13	405415	Spring, Rear Door, LH	36	192325	Bolt	--	420287	Repair Parts Manual
14	750634	Screw	37	150406	Bolt, Engine			
15	850733X004	Bracket, Upstop	38	---	Engine, Briggs & Stratton, Model Number 126T02 (order parts from B&S)			
16	401815X428	Rear Door Assembly						
17	184193	Bolt, Rear Door	39	407533	Grassbag			
18	198170	Plug, Mulcher	40	411951	Frame, Grassbag			
19	420288	Kit, Housing	41	182166	Danger Decal			
20	192980X479	Handle Bracket Assembly, LH	42	54583	Screw			
21	192979X479	Handle Bracket Assembly, RH	45	183058X428	Mulcher Door Assembly	--	71 33623	Gas Can (2.5 Gallon Container)
22	150078	Screw, Hex Washer Head	46	169699X428	Discharge Guard	--	71 33500	Fuel Stabilizer
23	163183	Bolt, Hex Head 5/16-18 x 5/8	47	88349	Nut, Hex	--	71 33000	SAE 30W Oil (20 Ounce Bottle)
24	73800500	Nut, Hex, with Lockwasher Insert 5/16-18	48	188839X004	Mounting Bracket, Debris Shield			

Available accessories (not included with mower):

**NOTE:** All component dimensions given in U.S. inches. 1 inch = 25.4 mm.

**IMPORTANT:** Use only Original Equipment Manufacturer (O.E.M.) replacement parts. Failure to do so could be hazardous, damage your lawn mower and void your warranty.

# CRAFTSMAN ROTARY LAWN MOWER -- MODEL NUMBER 25343 (253430)



# CRAFTSMAN ROTARY LAWN MOWER - - MODEL NUMBER 25343 (253430)

KEY NO.	PART NO.	DESCRIPTION	KEY NO.	PART NO.	DESCRIPTION
1	406254	Drive Control Assembly (Includes Cable)	31	404845	Pawl, Drive
2	406260X428	Cover, Top	32	407756X427	Wheel & Tire Assembly, Rear
3	406262	Pulley	33	409148	Nut, Flangelock 3/8-16
4	188281	Lever, Drive Control	34	404835	Pinion
5	406261X428	Cover, Bottom	39	401630	Washer, Curved, Cylindrical
6	181698	Screw	40	407754X427	Wheel & Tire Assembly, Front
7	400235X479	Mounting Bracket	44	406580	V-Belt
9	406258	Cable, Drive	47	67725	Washer
11	406558	Spring, Return	49	163409	Screw
13	404844	Gear Case Assembly, Complete	50	404832X004	Belt Keeper
14	193443	Pulley, Drive	60	412747	Case, Lower
15	409073	Kit, Wheel Adjuster Assembly, RH (Includes Knob and Bearing)	61	412736	Case, Upper
16	409074	Kit, Wheel Adjuster Assembly, LH (Includes Knob and Bearing)	62	412745	Shaft, Output, Long
17	166785	Nut, Hex	63	183508	Seal, Output Shaft
18	401621X004	Spring, Selector	64	183511	Bushing
19	701037	Knob, Selector Spring	65	183509	Washer
20	407494X005	Bracket, Wheel Adjusting	66	183514	Seal, Worm Shaft
21	401638	Bolt, Shoulder, Hex Head	67	183506	Bearing, Ball
22	191039	Bearing, Ball	68	412742	Gear, 28 Teeth
23	401175X004	Axle Arm Assembly, RH	69	412740	Movable Dog Clutch, LH
24	401174X004	Axle Arm Assembly, LH	70	412741	Pin, Worm Shaft
25	199775X428	Cover Drive	71	412739	Fixed Dog Clutch, LH
26	750634	Screw, Threaded, Rolled #10-25 x .50	72	412738	Shaft, Output, Short
27	401629	Spacer	73	183513	Screw, Case
28	12000058	E-Ring 7/16	75	412746	Pin, Output Shaft
29	189403	Cover, Dust, Wheel	76	412743	Movable Dog Clutch, RH
30	73800400	Nut, Hex	77	412744	Fixed Dog Clutch, RH
			78	410731	Spring, Leaf
			79	412737	Shaft, Worm

**NOTE:** All component dimensions given in U.S. inches. 1 inch = 25.4 mm.

**IMPORTANT:** Use only Original Equipment Manufacturer (O.E.M.) replacement parts. Failure to do so could be hazardous, damage your lawn mower and void your warranty.

## **LIMITED 2-YEAR WARRANTY ON CRAFTSMAN POWER MOWER**

When used and maintained according to the operator's manual instructions, if this power mower fails due to a defect in material or workmanship within two years from the date of purchase, return it to any Sears store, Parts & Repair Center, or other Craftsman outlet for free repair.

Warranty coverage does not include:

- Expendable items that become worn during normal use, including but not limited to blade, blade adapters, spark plug, air cleaner and belts.
- Standard maintenance servicing, oil changes, or tune-ups.
- Repairs necessary because of operator abuse, including but not limited to damage caused by impacting objects that bend the frame or crankshaft, or over-speeding the engine.
- Repairs necessary because of operator negligence, including but not limited to damage caused by improper storage, or failure to maintain the equipment according to the instructions contained in the operator's manual.
- Engine (fuel system) cleaning or repairs necessary because of fuel determined to be contaminated or oxidized (stale). In general, fuel should be used within 30 days of its purchase date.
- Normal deterioration and wear of the exterior finishes, or product label replacement.

This warranty applies for only 90 days if this product is used for commercial or rental purposes.

This warranty applies only while this product is within the United States.

This warranty gives you specific legal rights, and you may also have other rights, which vary, from state to state.

**Sears, Roebuck and Co., Dept. 817WA, Hoffman Estates, IL 60179**

**CRAFTSMAN®**