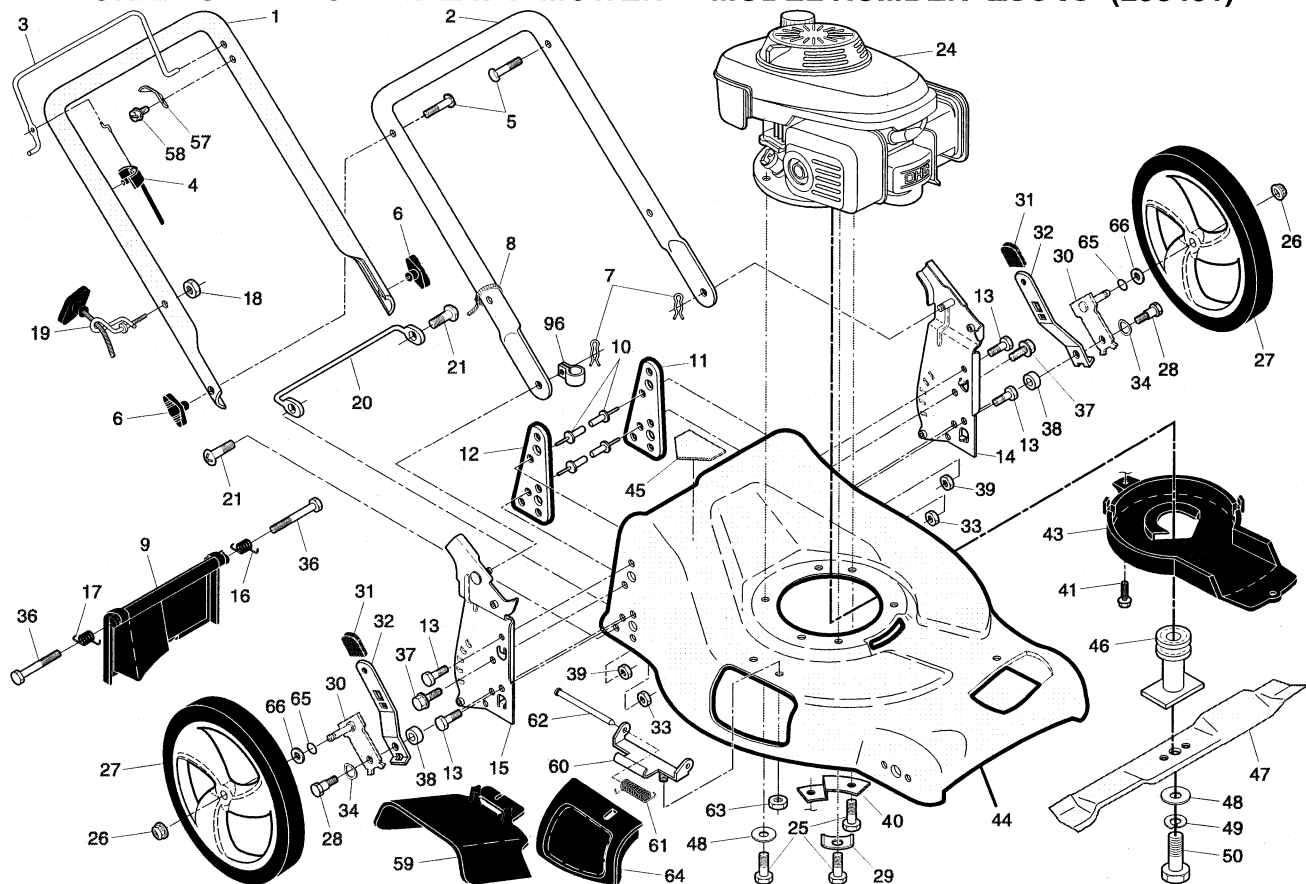


REPAIR PARTS MANUAL
MODEL NUMBER 25346
Rotary Lawn Mower

CRAFTSMAN®

CRAFTSMAN ROTARY LAWN MOWER - - MODEL NUMBER 25346 (253461)

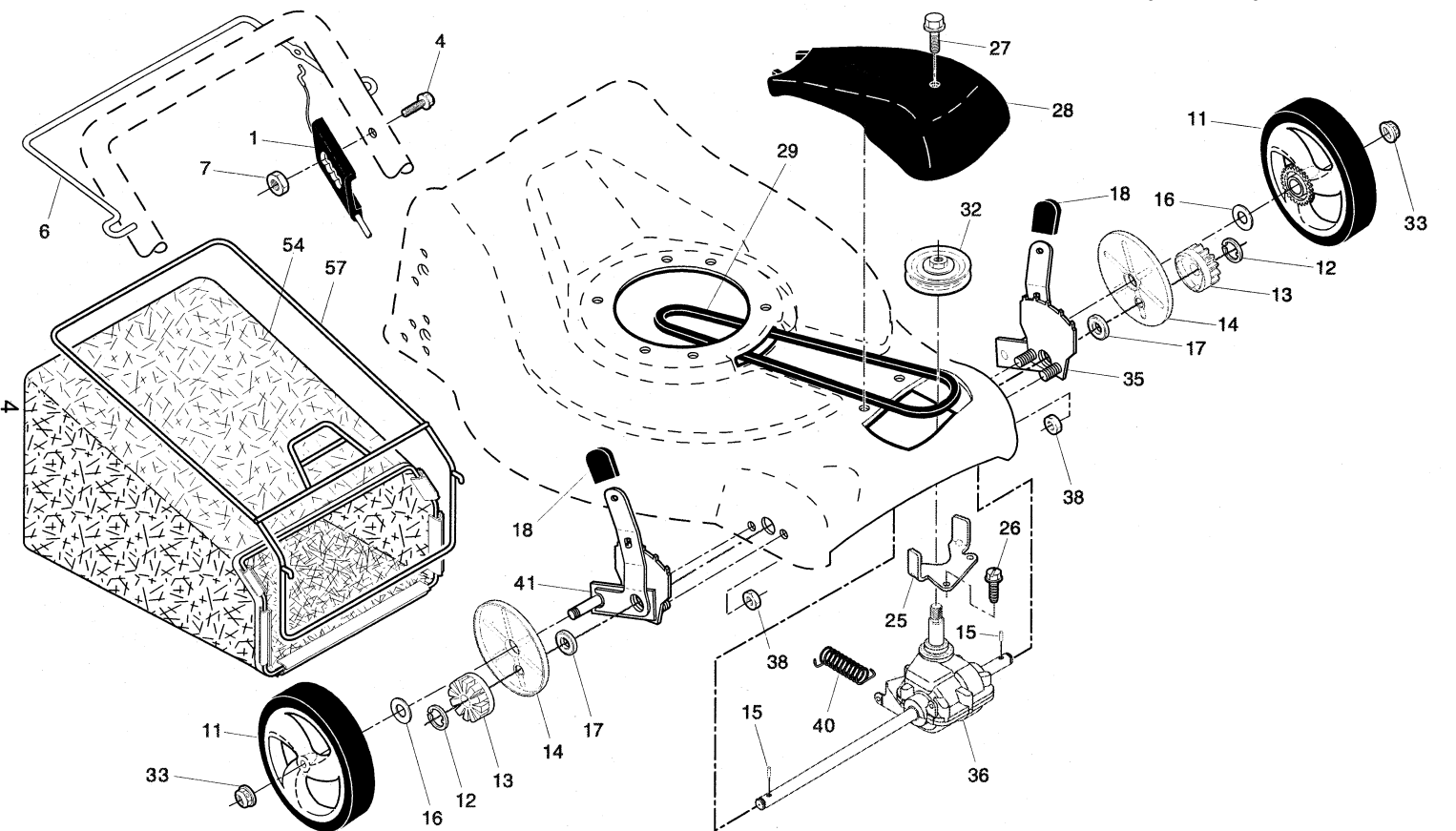


CRAFTSMAN ROTARY LAWN MOWER - - MODEL NUMBER 25346 (253461)

KEY NO.	PART NO.	DESCRIPTION	KEY NO.	PART NO.	DESCRIPTION	KEY NO.	PART NO.	DESCRIPTION
1	194200X479	Upper Handle	26	409149	Hex Flange Nut	48	851074	Hardened Washer
2	151721X479	Lower Handle	27	194387X427	Wheel & Tire Assembly, Rear, 12"	49	850263	Helical Washer
3	194199X428	Control Bar				50	851084	Hex Head Machine Screw 3/8-24 x 1-3/8 Grade 8
4	183567	Engine Zone Control Cable	28	401638	Shoulder Bolt 5/16-18 x .33	57	850733X004	Upstop Bracket
5	191574	Handle Bolt	29	851201X004	Washer, Special, Engine	58	750634	Screw
6	189713X428	Handle Knob	30	401181X004	Axle Arm Assembly, Rear	59	175071	Discharge Deflector
7	51793	Hairpin Cotter	31	701037	Selector Knob	60	175735	Hinge Bracket
8	66426	Wire Tie	32	401626X004	Selector Spring	61	193000	Spring, Hinge
9	401812X428	Rear Door	33	73800500	Nut, Hex 5/16-18	62	175650	Hinge Rod
10	128415	Pop Rivet	34	401630	Washer, Curved, Cylindrical	63	73800400	Nut, Hex
11	406573X479	Support Bracket, LH	36	184193	Bolt	64	175066	Mulcher Door
12	406574X479	Support Bracket, RH	37	74780512	Thread Cutting Screw w/Sems 5/16-18 x 3/4	65	197480	O-Ring
ω 13	17060410	Screw 1/4-20 x 5/8	38	401629	Spacer	66	88348	Washer, Flat 1/2
14	175576X479	Handle Bracket Assembly, LH	39	155377	Nut, Hex	96	197991	Clip, Cable
15	175577X479	Handle Bracket Assembly, RH	40	1888339X004	Mounting Bracket, Debris Shield	--	182134	Decal, Warning, Internal, Self-Propelled (not shown)
16	405417	Spring, Rear Door, LH	41	192325	Screw			
17	405418	Spring, Rear Door, RH	43	405844	Debris Shield			
18	132004	Keps Locknut 1/4-20	44	409265	Kit, Lawn Mower Housing (Includes Key Numbers 10, 11, 12 and 45)			
19	194788	Rope Guide	45	182166	Danger Decal			
20	169423X479	Foot Guard, C.E.	46	197752	Blade Adapter			
21	17490416	Screw, Tapping 1/4-20 x 1/2	47	199377	Blade, 21"			
24	---	Engine, Honda, Model Number GCV160 (order parts from Engine Manufacturer)						
25	150406	Hex Head Thread Rolling Screw 3/8-16 x 1-1/8						

This exploded view diagram illustrates the assembly of a mechanical device, likely a pump or motor. The components are numbered as follows:

- 1**: A small black rectangular component, possibly a switch or sensor.
- 2**: A metal frame or housing.
- 3**: A small circular component, possibly a pin or washer.
- 4**: A small screw or bolt.
- 5**: A small circular component, possibly a pin or washer.
- 6**: A metal frame or housing.
- 7**: A small circular component, possibly a pin or washer.
- 8**: A small circular component, possibly a pin or washer.
- 9**: A small circular component, possibly a pin or washer.
- 10**: A small circular component, possibly a pin or washer.
- 11**: A wheel with a tire.
- 12**: A gear or pulley.
- 13**: A gear or pulley.
- 14**: A gear or pulley.
- 15**: A long metal rod or shaft.
- 16**: A small circular component, possibly a pin or washer.
- 17**: A small circular component, possibly a pin or washer.
- 18**: A small circular component, possibly a pin or washer.
- 19**: A small circular component, possibly a pin or washer.
- 20**: A small circular component, possibly a pin or washer.
- 21**: A small circular component, possibly a pin or washer.
- 22**: A small circular component, possibly a pin or washer.
- 23**: A small circular component, possibly a pin or washer.
- 24**: A small circular component, possibly a pin or washer.
- 25**: A small circular component, possibly a pin or washer.
- 26**: A small circular component, possibly a pin or washer.
- 27**: A small circular component, possibly a pin or washer.
- 28**: A small circular component, possibly a pin or washer.
- 29**: A small circular component, possibly a pin or washer.
- 30**: A small circular component, possibly a pin or washer.
- 31**: A small circular component, possibly a pin or washer.
- 32**: A small circular component, possibly a pin or washer.
- 33**: A small circular component, possibly a pin or washer.
- 34**: A small circular component, possibly a pin or washer.
- 35**: A small circular component, possibly a pin or washer.
- 36**: A small circular component, possibly a pin or washer.
- 37**: A small circular component, possibly a pin or washer.
- 38**: A small circular component, possibly a pin or washer.
- 39**: A small circular component, possibly a pin or washer.
- 40**: A small circular component, possibly a pin or washer.
- 41**: A small circular component, possibly a pin or washer.



CRAFTSMAN ROTARY LAWN MOWER - - MODEL NUMBER 25346 (253461)

KEY NO.	PART NO.	DESCRIPTION
1	407816	Drive Control Assembly (Includes Cable)
4	199687	Hex Washer Head Screw 1/4-20 x 2.12
6	194185X615	Control Bar, Drive
7	191730	Locknut, Hex #10-24
11	194231X427	Wheel & Tire Assembly
12	12000058	E-Ring
13	403849	Pinion
14	189403	Dust Cover
15	404845	Pawl, Drive
16	67725	Washer 1/2 x 1-1/2 x .134
17	191039	Bearing, Wheel Adjuster
18	701037	Selector Knob
25	404843X004	Belt Keeper
26	163409	Screw

KEY NO.	PART NO.	DESCRIPTION
27	175262	Pan Head Tapping Screw #10-24 x 2-3/4
28	194406X428	Drive Cover
29	194149	V-Belt
32	194018	Drive Pulley
33	409148	Locknut, Hex
35	408862	Kit, Wheel Adjuster, LH (Includes Knob and Bearing)
36	404833	Gearcase Assembly, Complete
38	73800400	Locknut, Hex 1/4-20
40	406558	Spring
41	408861	Kit, Wheel Adjuster, RH (Includes Knob and Bearing)
54	410353	Grassbag Assembly
57	411950	Frame, Grassbag

LIMITED 2-YEAR WARRANTY ON CRAFTSMAN POWER MOWER

When used and maintained according to the operator's manual instructions, if this power mower fails due to a defect in material or workmanship within two years from the date of purchase, return it to any Sears store, Parts & Repair Center, or other Craftsman outlet for free repair.

Warranty coverage does not include:

- Expendable items that become worn during normal use, including but not limited to blade, blade adapters, spark plug, air cleaner and belts.
- Standard maintenance servicing, oil changes, or tune-ups.
- Repairs necessary because of operator abuse, including but not limited to damage caused by impacting objects that bend the frame or crankshaft, or over-speeding the engine.
- Repairs necessary because of operator negligence, including but not limited to damage caused by improper storage, or failure to maintain the equipment according to the instructions contained in the operator's manual.
- Engine (fuel system) cleaning or repairs necessary because of fuel determined to be contaminated or oxidized (stale). In general, fuel should be used within 30 days of its purchase date.
- Normal deterioration and wear of the exterior finishes, or product label replacement.

This warranty applies for only 90 days if this product is used for commercial or rental purposes.

This warranty applies only while this product is within the United States.

This warranty gives you specific legal rights, and you may also have other rights, which vary, from state to state.

Sears, Roebuck and Co., Dept. 817WA, Hoffman Estates, IL 60179

The Craftsman logo is displayed in a bold, black, sans-serif font. The word "CRAFTSMAN" is followed by a registered trademark symbol (®). The entire logo is enclosed within a thick black rectangular border.