

LIMITED TWO YEAR WARRANTY ON CRAFTSMAN POWER MOWER

For two years from date of purchase, when this Craftsman Lawn Mower is maintained, lubricated, and tuned up according to the operating and maintenance instructions in the owner's manual, Sears will repair free of charge any defect in material or workmanship.

If this Craftsman Lawn Mower is used for commercial or rental purposes, this warranty applies for only 90 days from the date of purchase.

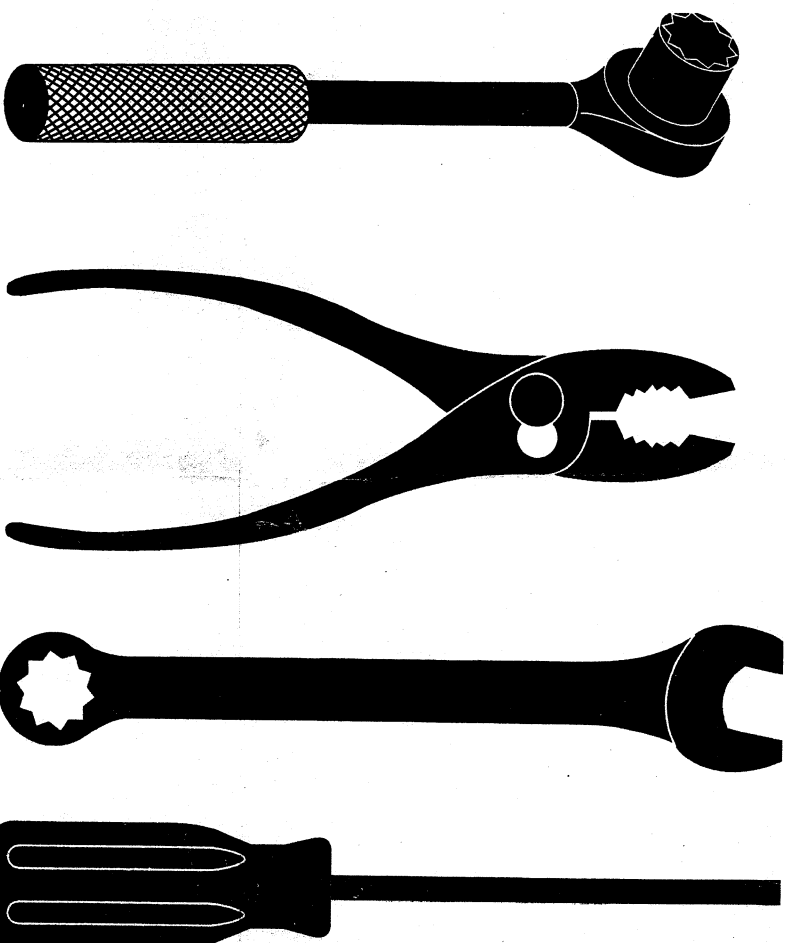
This Warranty does not cover:

- Expendable items which become worn during normal use, such as rotary mower blades, blade adapters, belts, air cleaners and spark plug.
- Repairs necessary because of operator abuse or negligence, including bent crankshafts and the failure to maintain the equipment according to the instructions contained in the owner's manual.

Warranty service is available by returning the Craftsman power mower to the nearest Sears Parts & Repair Center in the United States. This warranty applies only while this product is used in the United States.

This Warranty gives you specific legal rights, and you may also have other rights which vary from state to state.

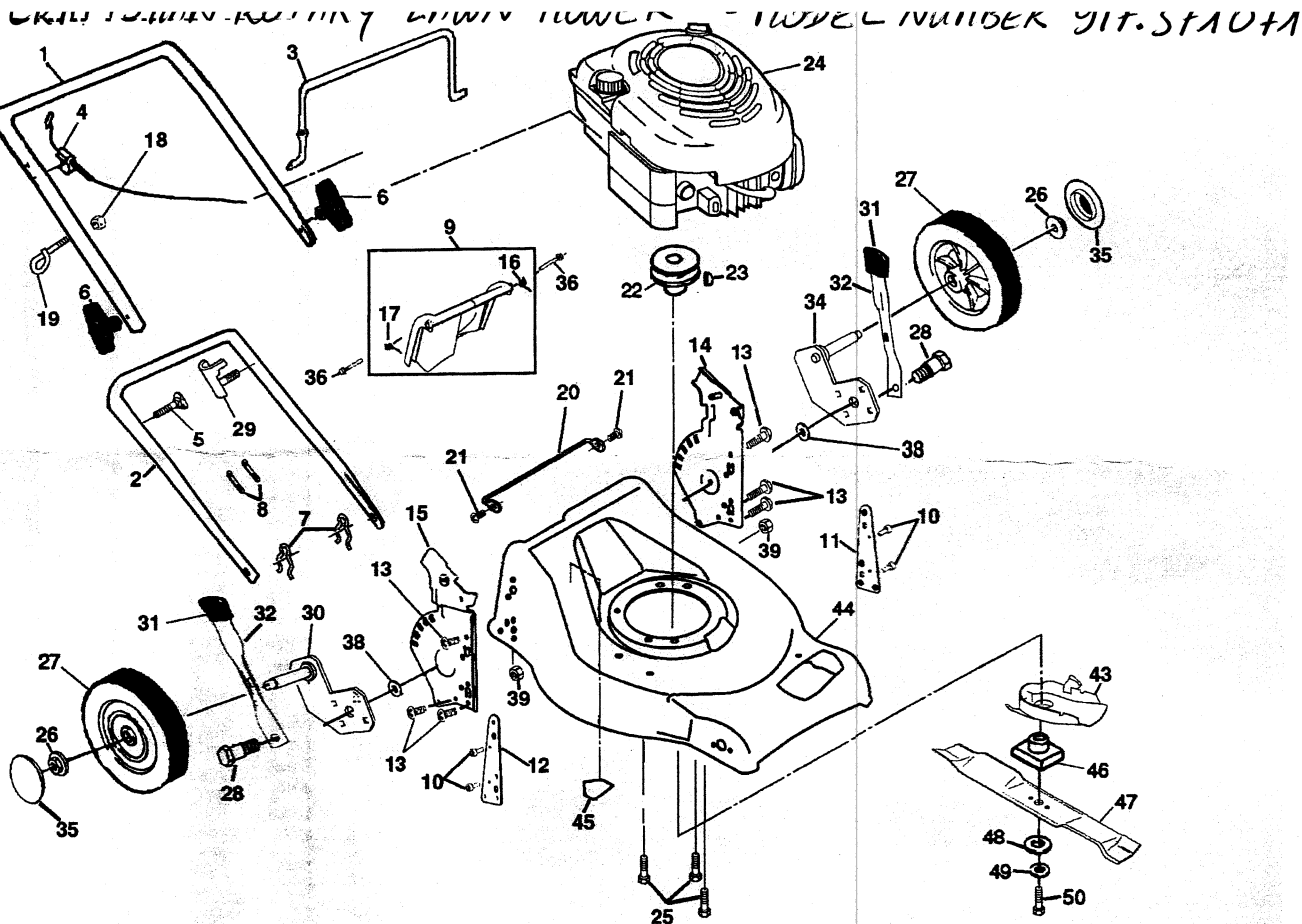
Sears, Roebuck And Co., D/817 WA, Hoffman Estates, IL 60179



REPAIR PARTS MANUAL MODEL NUMBER 371071 Rotary Lawn Mower

CRAFTSMAN®

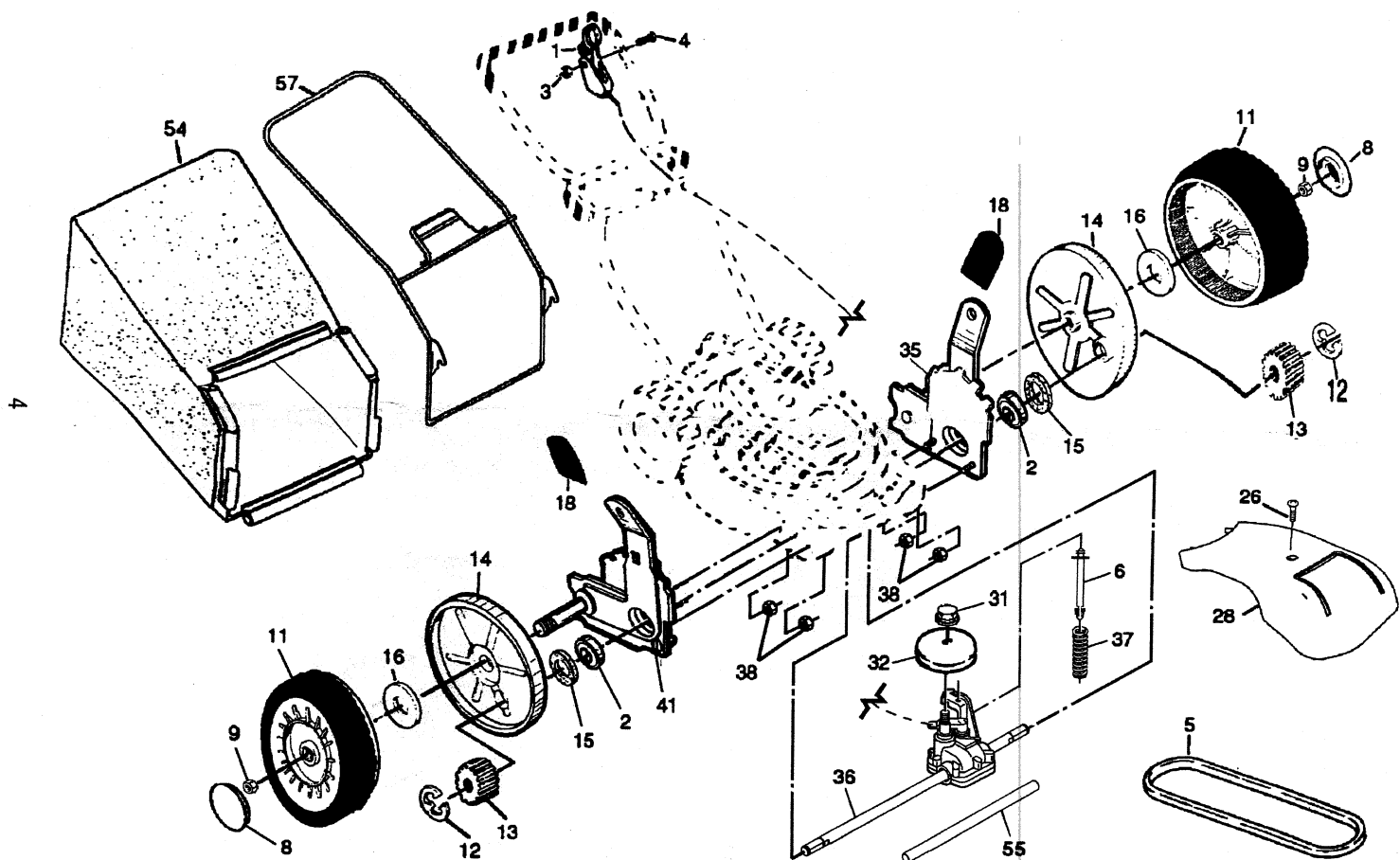
CRAFTSMAN®



CRAFTSMAN ROTARY LAWN MOWER - - MODEL NUMBER 917.371071

KEY PART NO.	NO.	DESCRIPTION	KEY PART NO.	NO.	DESCRIPTION
1	183230X479	Upper Handle	27	150341	Wheel
2	151721X479	Lower Handle	28	175231	Shoulder Bolt 5/16-18 x .33
3	186112	Control Bar	29	165108	Bracket, Anti-Fold
4	182755	Engine Zone Control Cable	30	165761X004	Axle Arm Assembly, RR
5	131959	Handle Bolt	31	180912	Selector Knob
6	181254	Handle Knob	32	175060X004	Selector Spring
7	51793	Hairpin Cotter	34	165762X004	Axle Arm Assembly, LR
8	66426	Wire Tie	35	180637	Hubcap
9	180479	Kit, Rear Door (Includes Key Numbers 16 and 17)	36	184193	Bolt
10	128415	Pop Rivet	38	176185	Washer, Step
11	175069X479	Support Bracket, LH	39	176235	Nut, Push
12	175070X479	Support Bracket, RH	43	175083	Debris Shield
13	17060410	Screw 1/4-20 x 5/8	44	187482	Kit, Lawn Mower Housing (Includes Key Numbers 10, 11, 12 and 45)
14	175082X479	Handle Bracket Assembly, LH	45	182166	Danger Decal
15	175081X479	Handle Bracket Assembly, RH	46	180069	Blade Adapter
16	180071	Spring, LH	47	175052	Blade, 21"
17	180072	Spring, RH	48	851074	Hardened Washer
18	132004	Keys Locknut 1/4-20	49	850263	Helical Washer 3/8-24 x 1-3/8 Grade 8
19	179585	Rope Guide	50	851084	Hex Head Machine Screw 3/8-24 x 1-3/8 Grade 8
20	179205	Guard, Foot	--	182134	Warning Decal (Not Shown)
21	54583	Hinge Screw 1/4-20 x 1-1/4	--	187477	Operator's Manual, European
22	84596	Engine Pulley	--	187480	Operator's Manual, Scandinavian
23	87677	Hi-Pro Key #505	--	191024	Repair Parts Manual
24	---	Engine, Briggs & Stratton, Model Number 123K02-0277-E1 (See Breakdown)			
25	150406	Hex Head Thread Rolling Screw 3/8-16 x 1-1/8			
26	83923	Hex Flange Nut			

NOTE: All component dimensions given in U.S. inches.
1 inch = 25.4 mm



CRAFTSMAN ROTARY LAWN MOWER - - MODEL NUMBER ER 917.371071

KEY NO.	PART NO.	DESCRIPTION
1	184586	Drive Control Assembly, with Cable
2	167387	Bearing, Wheel Adjuster
3	751152	Locknut #10-24
4	158755	Hex Washer Head Screw 1/4-20 x 2.12
5	175436	V-Belt
6	150495	Spring Retainer
8	180637	Hubcap
9	145212	Locknut
11	180775	Wheel & Tire Assembly
12	12000058	E-Ring
13	137054	Pinion
14	180504	Dust Cover
15	88118	Felt Washer
16	67725	Washer 1/2 x 1-1/2 x .134
18	180912	Selector Knob
26	175262	Panel Head Tapping Screw #10-24 x 2-3/4

KEY NO.	PART NO.	DESCRIPTION
28	178843	Drive Cover
31	132010	Hex Flange Nut
32	137052	Drive Pulley
35	151521	Kit, Wheel Adjuster, LH (Includes Knob and Bearing)
36	180184	Gear Case Assembly (See Breakdown)
37	137090	Spring
38	73800400	Locknut 1/4-20
41	151520	Kit, Wheel Adjuster, RH (Includes Knob and Bearing)
54	191023	Grassbag
55	175739	Driveshaft Cover
57	188815	Frame, Grassbag

NOTE: All component dimensions given in U.S. inches.
1 inch = 25.4 mm